

Datasheet for ABIN7001841

**anti-ABCB6 antibody****1** Image[Go to Product page](#)

## Overview

|              |                                      |
|--------------|--------------------------------------|
| Quantity:    | 20 µL                                |
| Target:      | ABCB6                                |
| Reactivity:  | Human, Mouse, Rat                    |
| Host:        | Rabbit                               |
| Clonality:   | Polyclonal                           |
| Conjugate:   | This ABCB6 antibody is un-conjugated |
| Application: | Western Blotting (WB), ELISA         |

## Product Details

|                  |                                    |
|------------------|------------------------------------|
| Immunogen:       | Recombinant protein of human ABCB6 |
| Isotype:         | IgG                                |
| Characteristics: | Polyclonal Antibody                |
| Purification:    | Affinity purification              |

## Target Details

|                   |                                                                                                                                                                                                                                                                                                                                                                   |
|-------------------|-------------------------------------------------------------------------------------------------------------------------------------------------------------------------------------------------------------------------------------------------------------------------------------------------------------------------------------------------------------------|
| Target:           | ABCB6                                                                                                                                                                                                                                                                                                                                                             |
| Alternative Name: | ABCB6 ( <a href="#">ABCB6 Products</a> )                                                                                                                                                                                                                                                                                                                          |
| Background:       | The membrane-associated protein encoded by this gene is a member of the superfamily of ATP-binding cassette (ABC) transporters. ABC proteins transport various molecules across extra- and intra-cellular membranes. ABC genes are divided into seven distinct subfamilies (ABC1, MDR/TAP, MRP, ALD, OABP, GCN20, White). This protein is a member of the MDR/TAP |

## Target Details

subfamily. Members of the MDR/TAP subfamily are involved in multidrug resistance as well as antigen presentation. This half-transporter likely plays a role in mitochondrial function. Localized to 2q26, this gene is considered a candidate gene for lethal neonatal metabolic syndrome, a disorder of mitochondrial function.

Molecular Weight: 94 kDa

UniProt: [Q9NP58](#)

Pathways: [Transition Metal Ion Homeostasis](#)

## Application Details

Application Notes: WB 1:200-1:1000

Restrictions: For Research Use only

## Handling

Format: Liquid

Concentration: 0.1 mg/mL

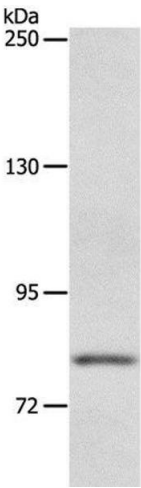
Buffer: PBS with 0.05 % sodium azide and 50 % glycerol, PH7.4

Preservative: Sodium azide

Precaution of Use: This product contains Sodium azide: a POISONOUS AND HAZARDOUS SUBSTANCE which should be handled by trained staff only.

Storage: -20 °C

Storage Comment: Store at -20°C. Avoid freeze / thaw cycles.



Western Blotting

**Image 1.** Western Blot analysis of Mouse liver tissue using ABCB6 Polyclonal Antibody at dilution of 1:250