



[Go to Product page](#)

Datasheet for ABIN7002044
anti-CATSPER3 antibody

1 Image

Overview

Quantity:	20 µL
Target:	CATSPER3
Reactivity:	Human, Mouse
Host:	Rabbit
Clonality:	Polyclonal
Conjugate:	This CATSPER3 antibody is un-conjugated
Application:	ELISA, Western Blotting (WB)

Product Details

Immunogen:	Recombinant protein of human CATSPER3
Isotype:	IgG
Characteristics:	Polyclonal Antibody
Purification:	Affinity purification

Target Details

Target:	CATSPER3
Alternative Name:	CATSPER3 (CATSPER3 Products)
Background:	CatSpers (cation channel, sperm associated proteins) are ion transport proteins located on the surface of sperm cells in the principal piece of the sperm tail. CatSpers are vital to sperm motility, fertilization and cAMP-mediated calcium influx in sperm. There are four CatSper proteins in mammalian sperm, namely CatSper (or CatSper1), CatSper2, CatSper3 and

Target Details

CatSper4. CatSper proteins contain a single, six-transmembrane-spanning segment and exhibit the voltage-dependent Ca²⁺ channel four-repeat structure. CatSper proteins are believed to assemble into a heterotetrameric complex, forming an alkalization-activated Ca²⁺-selective channel. Mutations in any of the genes encoding CatSper family proteins can result in male infertility. CatSper3 plays an important role in the hyperactivated motility of sperm cells, a process that is required in the preparation of sperm for fertilization.

Molecular Weight: 46 kDa

UniProt: [Q86XQ3](#)

Application Details

Application Notes: WB 1:500-1:2000

Restrictions: For Research Use only

Handling

Format: Liquid

Concentration: 0.4 mg/mL

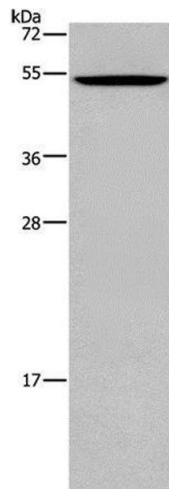
Buffer: PBS with 0.05 % sodium azide and 50 % glycerol, PH7.4

Preservative: Sodium azide

Precaution of Use: This product contains Sodium azide: a POISONOUS AND HAZARDOUS SUBSTANCE which should be handled by trained staff only.

Storage: -20 °C

Storage Comment: Store at -20°C. Avoid freeze / thaw cycles.



Western Blotting

Image 1. Western Blot analysis of Mouse testis tissue using CATSPER3 Polyclonal Antibody at dilution of 1:350