

Datasheet for ABIN7002115

anti-DEPDC1 antibody[Go to Product page](#)**1** Image

Overview

Quantity:	20 µL
Target:	DEPDC1
Reactivity:	Human
Host:	Rabbit
Clonality:	Polyclonal
Conjugate:	This DEPDC1 antibody is un-conjugated
Application:	Western Blotting (WB), ELISA

Product Details

Immunogen:	Recombinant protein of human DEPDC1
Isotype:	IgG
Characteristics:	Polyclonal Antibody
Purification:	Affinity purification

Target Details

Target:	DEPDC1
Alternative Name:	DEPDC1 (DEPDC1 Products)
Background:	DEP domain containing 1 is a protein in humans that is encoded by the DEPDC1 gene. May be involved in transcriptional regulation as a transcriptional corepressor. The DEPDC1A-ZNF224 complex may play a critical role in bladder carcinogenesis by repressing the transcription of the A20 gene, leading to transport of NF-KB protein into the nucleus, resulting in suppression of

Target Details

apoptosis of bladder cancer cells.

Molecular Weight: 93 kDa

UniProt: [Q5TB30](#)

Application Details

Application Notes: WB 1:200-1:1000

Restrictions: For Research Use only

Handling

Format: Liquid

Concentration: 0.5 mg/mL

Buffer: PBS with 0.05 % sodium azide and 50 % glycerol, PH7.4

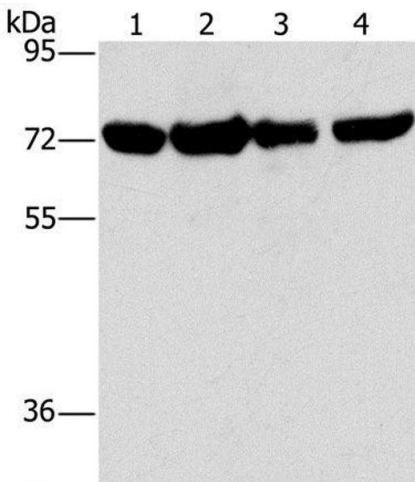
Preservative: Sodium azide

Precaution of Use: This product contains Sodium azide: a POISONOUS AND HAZARDOUS SUBSTANCE which should be handled by trained staff only.

Storage: -20 °C

Storage Comment: Store at -20°C. Avoid freeze / thaw cycles.

Images



Western Blotting

Image 1. Western Blot analysis of A172, hela, hepg2 and 293T cell using DEPDC1 Polyclonal Antibody at dilution of 1:150