

Datasheet for ABIN7002136

anti-ELAC2 antibody[Go to Product page](#)**1** Image

Overview

Quantity:	20 µL
Target:	ELAC2
Reactivity:	Human, Mouse, Rat
Host:	Rabbit
Clonality:	Polyclonal
Conjugate:	This ELAC2 antibody is un-conjugated
Application:	Western Blotting (WB), ELISA

Product Details

Immunogen:	Recombinant protein of human ELAC2
Isotype:	IgG
Characteristics:	Polyclonal Antibody
Purification:	Affinity purification

Target Details

Target:	ELAC2
Alternative Name:	ELAC2 (ELAC2 Products)
Background:	<p>The protein encoded by this gene has a C-terminal domain with tRNA 3', processing endoribonuclease activity, which catalyzes the removal of the 3' trailer from precursor tRNAs.</p> <p>The protein also interacts with activated Smad family member 2 (Smad2) and its nuclear partner forkhead box H1 (also known as FAST-1), and reduced expression can suppress</p>

Target Details

transforming growth factor-beta induced growth arrest. Mutations in this gene result in an increased risk of prostate cancer. Multiple transcript variants encoding different isoforms have been found for this gene.

Molecular Weight:	92 kDa
UniProt:	Q9BQ52

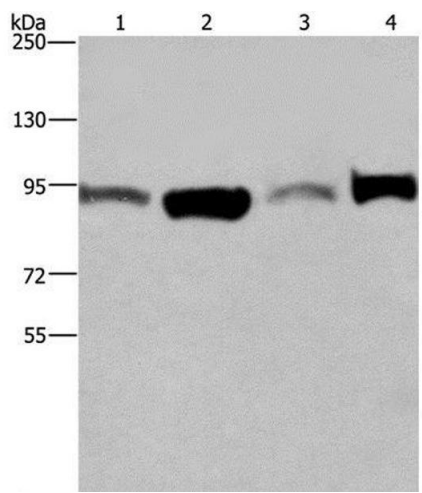
Application Details

Application Notes:	WB 1:500-1:2000
Restrictions:	For Research Use only

Handling

Format:	Liquid
Concentration:	0.7 mg/mL
Buffer:	PBS with 0.05 % sodium azide and 50 % glycerol, PH7.4
Preservative:	Sodium azide
Precaution of Use:	This product contains Sodium azide: a POISONOUS AND HAZARDOUS SUBSTANCE which should be handled by trained staff only.
Storage:	-20 °C
Storage Comment:	Store at -20°C. Avoid freeze / thaw cycles.

Images



Western Blotting

Image 1. Western Blot analysis of A375 and LoVo cell, Human testis tissue and Hela cell using ELAC2 Polyclonal Antibody at dilution of 1:250