



Datasheet for ABIN7002254 anti-INSIG2 antibody



[Go to Product page](#)

1 Image

Overview

Quantity:	20 µL
Target:	INSIG2
Reactivity:	Mouse, Human, Rat
Host:	Rabbit
Clonality:	Polyclonal
Application:	ELISA, Immunohistochemistry (IHC)

Product Details

Immunogen:	Recombinant protein of human INSIG2
Isotype:	IgG
Characteristics:	Polyclonal Antibody
Purification:	Affinity purification

Target Details

Target:	INSIG2
Alternative Name:	INSIG2 (INSIG2 Products)
Background:	The protein encoded by this gene is highly similar to the protein product encoded by gene INSIG1. Both INSIG1 protein and this protein are endoplasmic reticulum proteins that block the processing of sterol regulatory element binding proteins (SREBPs) by binding to SREBP cleavage-activating protein (SCAP), and thus prevent SCAP from escorting SREBPs to the Golgi.
UniProt:	Q9Y5U4

Target Details

Pathways: [ER-Nucleus Signaling](#)

Application Details

Application Notes: IHC 1:50-1:200

Restrictions: For Research Use only

Handling

Format: Liquid

Concentration: 0.3 mg/mL

Buffer: PBS with 0.05 % sodium azide and 50 % glycerol, PH7.4

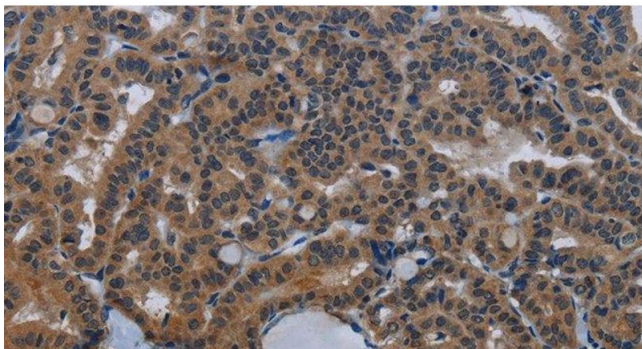
Preservative: Sodium azide

Precaution of Use: This product contains Sodium azide: a POISONOUS AND HAZARDOUS SUBSTANCE which should be handled by trained staff only.

Storage: -20 °C

Storage Comment: Store at -20°C. Avoid freeze / thaw cycles.

Images



Immunohistochemistry (Paraffin-embedded Sections)

Image 1. Immunohistochemistry of paraffin-embedded Human thyroid cancer tissue using INSIG2 Polyclonal Antibody at dilution 1:30