

Datasheet for ABIN7002344

## anti-OXSR1 antibody



[Go to Product page](#)

### 1 Image

#### Overview

Quantity:	20 µL
Target:	OXSR1
Reactivity:	Human, Mouse
Host:	Rabbit
Clonality:	Polyclonal
Conjugate:	This OXSR1 antibody is un-conjugated
Application:	Western Blotting (WB), ELISA

#### Product Details

Immunogen:	Recombinant protein of human OXSR1
Isotype:	IgG
Characteristics:	Polyclonal Antibody
Purification:	Affinity purification

#### Target Details

Target:	OXSR1
Alternative Name:	OXSR1 ( <a href="#">OXSR1 Products</a> )
Background:	The product of this gene belongs to the Ser/Thr protein kinase family of proteins. It regulates downstream kinases in response to environmental stress, and may play a role in regulating the actin cytoskeleton.

## Target Details

Molecular Weight:	58 kDa
UniProt:	<a href="#">O95747</a>
Pathways:	<a href="#">Tube Formation</a>

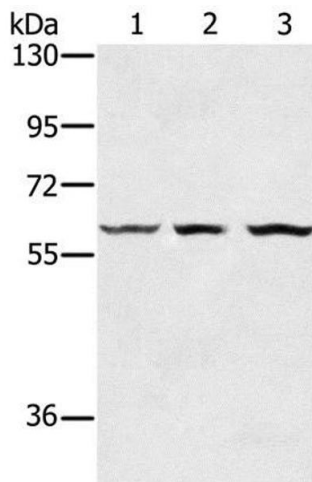
## Application Details

Application Notes:	WB 1:500-1:2000
Restrictions:	For Research Use only

## Handling

Format:	Liquid
Concentration:	0.2 mg/mL
Buffer:	PBS with 0.05 % sodium azide and 50 % glycerol, PH7.4
Preservative:	Sodium azide
Precaution of Use:	This product contains Sodium azide: a POISONOUS AND HAZARDOUS SUBSTANCE which should be handled by trained staff only.
Storage:	-20 °C
Storage Comment:	Store at -20°C. Avoid freeze / thaw cycles.

## Images



### Western Blotting

**Image 1.** Western Blot analysis of Human breast infiltrative duct tissue, Jurkat and HT-29 cell using OXSR1 Polyclonal Antibody at dilution of 1:300