

Datasheet for ABIN7002761

anti-GIPR antibody[Go to Product page](#)**1** Image

Overview

Quantity:	20 µL
Target:	GIPR
Reactivity:	Human, Mouse
Host:	Rabbit
Clonality:	Polyclonal
Conjugate:	This GIPR antibody is un-conjugated
Application:	Western Blotting (WB), ELISA

Product Details

Immunogen:	Synthetic peptide of human GIPR
Isotype:	IgG
Characteristics:	Polyclonal Antibody
Purification:	Affinity purification

Target Details

Target:	GIPR
Alternative Name:	GIPR (GIPR Products)
Background:	This gene encodes a G-protein coupled receptor for gastric inhibitory polypeptide (GIP), which was originally identified as an activity in gut extracts that inhibited gastric acid secretion and gastrin release, but subsequently was demonstrated to stimulate insulin release in the presence of elevated glucose. Mice lacking this gene exhibit higher blood glucose levels with impaired

Target Details

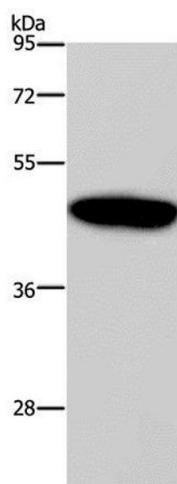
	initial insulin response after oral glucose load. Defect in this gene thus may contribute to the pathogenesis of diabetes.
Molecular Weight:	53 kDa
NCBI Accession:	NP_000155
UniProt:	P48546
Pathways:	Positive Regulation of Peptide Hormone Secretion , cAMP Metabolic Process , Regulation of G-Protein Coupled Receptor Protein Signaling

Application Details

Application Notes:	WB 1:200-1:1000
Restrictions:	For Research Use only

Handling

Format:	Liquid
Concentration:	0.3 mg/mL
Buffer:	PBS with 0.05 % sodium azide and 50 % glycerol, PH7.4
Preservative:	Sodium azide
Precaution of Use:	This product contains Sodium azide: a POISONOUS AND HAZARDOUS SUBSTANCE which should be handled by trained staff only.
Storage:	-20 °C
Storage Comment:	Store at -20°C. Avoid freeze / thaw cycles.



Western Blotting

Image 1. Western Blot analysis of Mouse pancreas tissue using GIPR Polyclonal Antibody at dilution of 1:200