



Datasheet for ABIN7002976

anti-LLGL1 antibody



[Go to Product page](#)

1 Image

Overview

Quantity:	20 µL
Target:	LLGL1
Reactivity:	Human
Host:	Rabbit
Clonality:	Polyclonal
Conjugate:	This LLGL1 antibody is un-conjugated
Application:	ELISA, Western Blotting (WB)

Product Details

Immunogen:	Synthetic peptide of human LLGL1
Isotype:	IgG
Characteristics:	Polyclonal Antibody
Purification:	Affinity purification

Target Details

Target:	LLGL1
Alternative Name:	LLGL1 (LLGL1 Products)

Background: This gene encodes a protein that is similar to a tumor suppressor in Drosophila. The protein is part of a cytoskeletal network and is associated with nonmuscle myosin II heavy chain and a kinase that specifically phosphorylates this protein at serine residues. The gene is located within the Smith-Magenis syndrome region on chromosome 17.

Target Details

Molecular Weight:	115 kDa
NCBI Accession:	NP_004131
UniProt:	Q15334
Pathways:	WNT Signaling

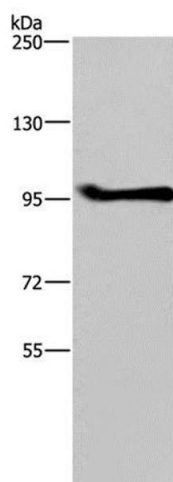
Application Details

Application Notes:	WB 1:500-1:2000
Restrictions:	For Research Use only

Handling

Format:	Liquid
Concentration:	0.6 mg/mL
Buffer:	PBS with 0.05 % sodium azide and 50 % glycerol, PH7.4
Preservative:	Sodium azide
Precaution of Use:	This product contains Sodium azide: a POISONOUS AND HAZARDOUS SUBSTANCE which should be handled by trained staff only.
Storage:	-20 °C
Storage Comment:	Store at -20°C. Avoid freeze / thaw cycles.

Images



Western Blotting

Image 1. Western Blot analysis of A549 cell using LLGL1 Polyclonal Antibody at dilution of 1:350