

Datasheet for ABIN7002978

anti-LOXL4 antibody[Go to Product page](#)**1** Image

Overview

Quantity:	20 µL
Target:	LOXL4
Reactivity:	Human
Host:	Rabbit
Clonality:	Polyclonal
Conjugate:	This LOXL4 antibody is un-conjugated
Application:	ELISA, Immunohistochemistry (IHC)

Product Details

Immunogen:	Synthetic peptide of human LOXL4
Isotype:	IgG
Characteristics:	Polyclonal Antibody
Purification:	Affinity purification

Target Details

Target:	LOXL4
Alternative Name:	LOXL4 (LOXL4 Products)
Background:	This gene encodes a member of the lysyl oxidase gene family. The prototypic member of the family is essential to the biogenesis of connective tissue, encoding an extracellular copper-dependent amine oxidase that catalyses the first step in the formation of crosslinks in collagens and elastin. A highly conserved amino acid sequence at the C-terminus end appears

Target Details

to be sufficient for amine oxidase activity, suggesting that each family member may retain this function. The N-terminus is poorly conserved and may impart additional roles in developmental regulation, senescence, tumor suppression, cell growth control, and chemotaxis to each member of the family.

NCBI Accession: [NP_115587](#)

UniProt: [Q96JB6](#)

Application Details

Application Notes: IHC 1:25-1:100

Restrictions: For Research Use only

Handling

Format: Liquid

Concentration: 1.1 mg/mL

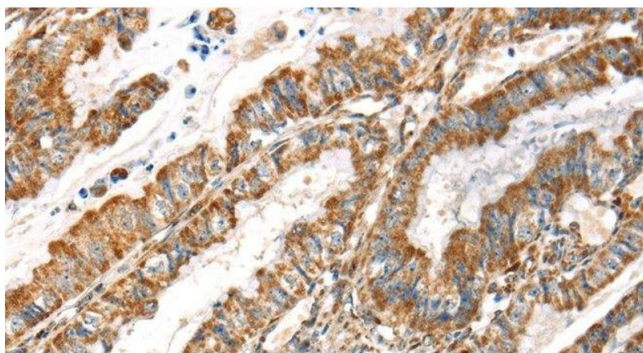
Buffer: PBS with 0.05 % sodium azide and 50 % glycerol, PH7.4

Preservative: Sodium azide

Precaution of Use: This product contains Sodium azide: a POISONOUS AND HAZARDOUS SUBSTANCE which should be handled by trained staff only.

Storage: -20 °C

Storage Comment: Store at -20°C. Avoid freeze / thaw cycles.



Immunohistochemistry (Paraffin-embedded Sections)

Image 1. Immunohistochemistry of paraffin-embedded Human esophagus cancer tissue using LOXL4 Polyclonal Antibody at dilution 1:35