



Datasheet for ABIN7003033  
**anti-SLC45A3 antibody**



[Go to Product page](#)

1 Image

Overview

Quantity:	20 µL
Target:	SLC45A3
Reactivity:	Human, Mouse
Host:	Rabbit
Clonality:	Polyclonal
Conjugate:	This SLC45A3 antibody is un-conjugated
Application:	Western Blotting (WB), ELISA

Product Details

Immunogen:	Synthetic peptide of human SLC45A3
Isotype:	IgG
Characteristics:	Polyclonal Antibody
Purification:	Affinity purification

Target Details

Target:	SLC45A3
Alternative Name:	SLC45A3 ( <a href="#">SLC45A3 Products</a> )
Background:	Solute carrier family 45 member 3(SLC45A3), also known as prostate cancer-associated protein 6 or prostestin, is a protein that in humans is encoded by the SLC45A3 gene. SLC45A3 is expressed in a prostate-specific manner by normal tissues and at a significantly lower level in prostate tumor cell lines. Treatment prostate cancer cell lines with androgens upregulates the

## Target Details

expression of SLC45A3.

Molecular Weight: 59 kDa

NCBI Accession: [NP\\_149093](#)

UniProt: [Q96JT2](#)

## Application Details

Application Notes: WB 1:200-1:1000

Restrictions: For Research Use only

## Handling

Format: Liquid

Concentration: 0.7 mg/mL

Buffer: PBS with 0.05 % sodium azide and 50 % glycerol, PH7.4

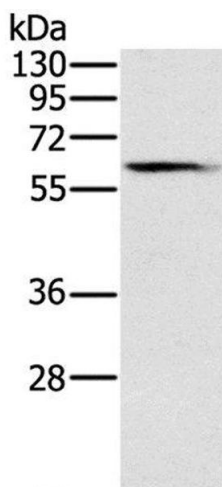
Preservative: Sodium azide

Precaution of Use: This product contains Sodium azide: a POISONOUS AND HAZARDOUS SUBSTANCE which should be handled by trained staff only.

Storage: -20 °C

Storage Comment: Store at -20°C. Avoid freeze / thaw cycles.

## Images



### Western Blotting

**Image 1.** Western Blot analysis of Human fetal brain tissue using SLC45A3 Polyclonal Antibody at dilution of 1:200