

Datasheet for ABIN7003079  
**anti-Cadherin 4 antibody**[Go to Product page](#)

## 1 Image

## Overview

Quantity:	20 µL
Target:	Cadherin 4 (CDH4)
Reactivity:	Human, Mouse
Host:	Rabbit
Clonality:	Polyclonal
Conjugate:	This Cadherin 4 antibody is un-conjugated
Application:	Western Blotting (WB), ELISA

## Product Details

Immunogen:	Synthetic peptide of human CDH4
Isotype:	IgG
Characteristics:	Polyclonal Antibody
Purification:	Affinity purification

## Target Details

Target:	Cadherin 4 (CDH4)
Alternative Name:	R-Cadherin ( <a href="#">CDH4 Products</a> )
Background:	This gene is a classical cadherin from the cadherin superfamily. The encoded protein is a calcium-dependent cell-cell adhesion glycoprotein comprised of five extracellular cadherin repeats, a transmembrane region and a highly conserved cytoplasmic tail. Based on studies in chicken and mouse, this cadherin is thought to play an important role during brain

## Target Details

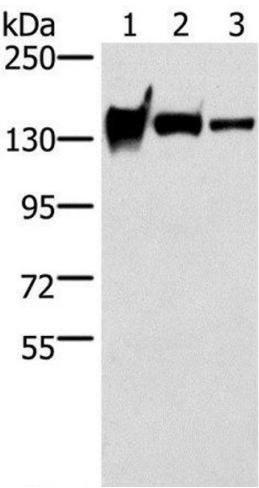
	segmentation and neuronal outgrowth. In addition, a role in kidney and muscle development is indicated.
Molecular Weight:	100 kDa
NCBI Accession:	<a href="#">NP_001239267</a>
UniProt:	<a href="#">P55283</a>
Pathways:	<a href="#">Cell-Cell Junction Organization</a> , <a href="#">Regulation of Cell Size</a>

## Application Details

Application Notes:	WB 1:500-1:2000
Restrictions:	For Research Use only

## Handling

Format:	Liquid
Concentration:	0.7 mg/mL
Buffer:	PBS with 0.05 % sodium azide and 50 % glycerol, PH7.4
Preservative:	Sodium azide
Precaution of Use:	This product contains Sodium azide: a POISONOUS AND HAZARDOUS SUBSTANCE which should be handled by trained staff only.
Storage:	-20 °C
Storage Comment:	Store at -20°C. Avoid freeze / thaw cycles.



Western Blotting

**Image 1.** Western Blot analysis of Mouse heart tissue, A172 and 231 cell using R-Cadherin Polyclonal Antibody at dilution of 1:200