

Datasheet for ABIN7003086

**anti-RYR1 antibody****1** Image[Go to Product page](#)

## Overview

Quantity:	20 µL
Target:	RYR1
Reactivity:	Human, Mouse, Rat
Host:	Rabbit
Clonality:	Polyclonal
Conjugate:	This RYR1 antibody is un-conjugated
Application:	ELISA, Western Blotting (WB)

## Product Details

Immunogen:	Synthetic peptide of human RYR1
Isotype:	IgG
Characteristics:	Polyclonal Antibody
Purification:	Affinity purification

## Target Details

Target:	RYR1
Alternative Name:	RYR1 ( <a href="#">RYR1 Products</a> )
Background:	This gene encodes a ryanodine receptor found in skeletal muscle. The encoded protein functions as a calcium release channel in the sarcoplasmic reticulum but also serves to connect the sarcoplasmic reticulum and transverse tubule. Mutations in this gene are associated with malignant hyperthermia susceptibility, central core disease, and minicore

## Target Details

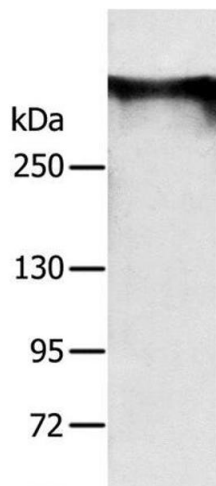
	myopathy with external ophthalmoplegia. Alternatively spliced transcripts encoding different isoforms have been described.
Molecular Weight:	565 kDa
NCBI Accession:	<a href="#">NP_000531</a>
UniProt:	<a href="#">P21817</a>
Pathways:	<a href="#">Myometrial Relaxation and Contraction, Skeletal Muscle Fiber Development</a>

## Application Details

Application Notes:	WB 1:200-1:1000
Restrictions:	For Research Use only

## Handling

Format:	Liquid
Concentration:	0.3 mg/mL
Buffer:	PBS with 0.05 % sodium azide and 50 % glycerol, PH7.4
Preservative:	Sodium azide
Precaution of Use:	This product contains Sodium azide: a POISONOUS AND HAZARDOUS SUBSTANCE which should be handled by trained staff only.
Storage:	-20 °C
Storage Comment:	Store at -20°C. Avoid freeze / thaw cycles.



#### Western Blotting

**Image 1.** Western Blot analysis of Mouse brain tissue using RYR1 Polyclonal Antibody at dilution of 1:300