



Datasheet for ABIN7003098

**anti-Solute Carrier Family 5 (Sodium/inositol Cotransporter),
Member 11 (SLC5A11) antibody**



[Go to Product page](#)

1 Image

Overview

Quantity:	20 µL
Target:	Solute Carrier Family 5 (Sodium/inositol Cotransporter), Member 11 (SLC5A11)
Reactivity:	Human, Mouse, Rat
Host:	Rabbit
Clonality:	Polyclonal
Conjugate:	Un-conjugated
Application:	ELISA, Immunohistochemistry (IHC)

Product Details

Immunogen:	Synthetic peptide of human SLC5A11
Isotype:	IgG
Characteristics:	Polyclonal Antibody
Purification:	Affinity purification

Target Details

Target:	Solute Carrier Family 5 (Sodium/inositol Cotransporter), Member 11 (SLC5A11)
Alternative Name:	SLC5A11 (SLC5A11 Products)
Background:	Cotransporters, such as SLC5A11, represent a major class of proteins that make use of ion gradients to drive active transport for the cellular accumulation of nutrients, neurotransmitters, osmolytes, and ions Roll et al.

Target Details

NCBI Accession: [NP_443176](#)

UniProt: [Q8WWX8](#)

Application Details

Application Notes: IHC 1:30-1:150

Restrictions: For Research Use only

Handling

Format: Liquid

Concentration: 0.7 mg/mL

Buffer: PBS with 0.05 % sodium azide and 50 % glycerol, PH7.4

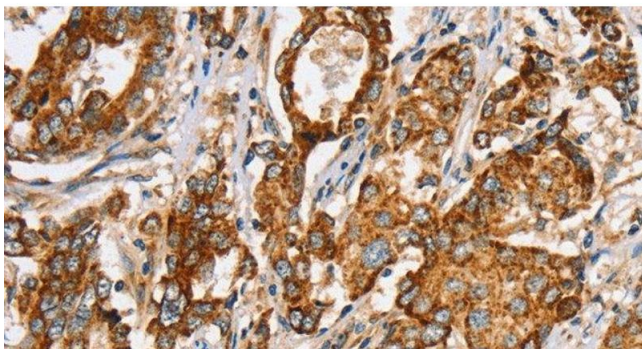
Preservative: Sodium azide

Precaution of Use: This product contains Sodium azide: a POISONOUS AND HAZARDOUS SUBSTANCE which should be handled by trained staff only.

Storage: -20 °C

Storage Comment: Store at -20°C. Avoid freeze / thaw cycles.

Images



Immunohistochemistry (Paraffin-embedded Sections)

Image 1. Immunohistochemistry of paraffin-embedded Human liver cancer tissue using SLC5A11 Polyclonal Antibody at dilution 1:35