

Datasheet for ABIN7003103

**anti-SMYD5 antibody**[Go to Product page](#)**1** Image

## Overview

Quantity:	20 µL
Target:	SMYD5
Reactivity:	Human, Mouse
Host:	Rabbit
Clonality:	Polyclonal
Conjugate:	This SMYD5 antibody is un-conjugated
Application:	Western Blotting (WB), ELISA

## Product Details

Immunogen:	Synthetic peptide of human SMYD5
Isotype:	IgG
Characteristics:	Polyclonal Antibody
Purification:	Affinity purification

## Target Details

Target:	SMYD5
Alternative Name:	SMYD5 ( <a href="#">SMYD5 Products</a> )
Background:	The SMYD (SET and MYND domain) family of lysine methyltransferases (KMTs) plays pivotal roles in various cellular processes, including gene expression regulation and DNA damage response. SMYD1, SMYD2, and SMYD3 share a high degree of sequence homology and, with the exception of SMYD5, human SMYD proteins harbor at least one C-terminal tetratric

## Target Details

peptide repeat (TPR) domain. The SMYD proteins have been found to be linked to various cancers and biological processes.

Molecular Weight:	47 kDa
NCBI Accession:	<a href="#">NP_006053</a>
UniProt:	<a href="#">Q6GMV2</a>

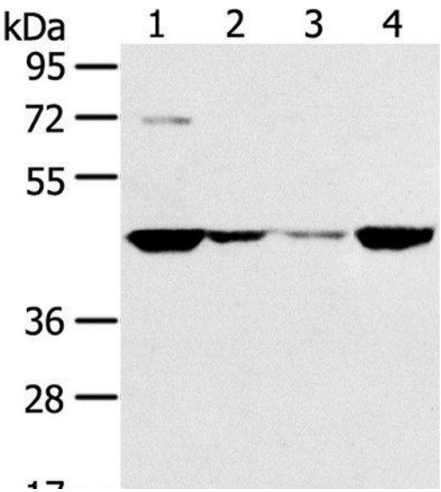
## Application Details

Application Notes:	WB 1:500-1:2000
Restrictions:	For Research Use only

## Handling

Format:	Liquid
Concentration:	0.2 mg/mL
Buffer:	PBS with 0.05 % sodium azide and 50 % glycerol, PH7.4
Preservative:	Sodium azide
Precaution of Use:	This product contains Sodium azide: a POISONOUS AND HAZARDOUS SUBSTANCE which should be handled by trained staff only.
Storage:	-20 °C
Storage Comment:	Store at -20°C. Avoid freeze / thaw cycles.

## Images



### Western Blotting

**Image 1.** Western Blot analysis of HT-29, 231, hela and A549 cell using SMYD5 Polyclonal Antibody at dilution of 1:200