

Datasheet for ABIN7003136

**anti-TREM2 antibody**[Go to Product page](#)**1** Image

## Overview

Quantity:	20 µL
Target:	TREM2
Reactivity:	Mouse, Human
Host:	Rabbit
Clonality:	Polyclonal
Conjugate:	This TREM2 antibody is un-conjugated
Application:	Western Blotting (WB), ELISA

## Product Details

Immunogen:	Synthetic peptide of human TREM2
Isotype:	IgG
Characteristics:	Polyclonal Antibody
Purification:	Affinity purification

## Target Details

Target:	TREM2
Alternative Name:	TREM2 ( <a href="#">TREM2 Products</a> )
Background:	This gene encodes a membrane protein that forms a receptor signaling complex with the TYRO protein tyrosine kinase binding protein. The encoded protein functions in immune response and may be involved in chronic inflammation by triggering the production of constitutive inflammatory cytokines. Defects in this gene are a cause of polycystic lipomembranous

## Target Details

	osteodysplasia with sclerosing leukoencephalopathy (PLOSL).
Molecular Weight:	25 kDa
NCBI Accession:	<a href="#">NP_061838</a>
UniProt:	<a href="#">Q9NZC2</a>

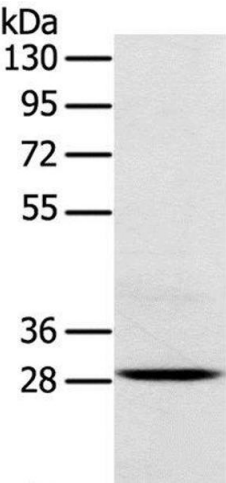
## Application Details

Application Notes:	WB 1:200-1:1000
Restrictions:	For Research Use only

## Handling

Format:	Liquid
Concentration:	0.4 mg/mL
Buffer:	PBS with 0.05 % sodium azide and 50 % glycerol, PH7.4
Preservative:	Sodium azide
Precaution of Use:	This product contains Sodium azide: a POISONOUS AND HAZARDOUS SUBSTANCE which should be handled by trained staff only.
Storage:	-20 °C
Storage Comment:	Store at -20°C. Avoid freeze / thaw cycles.

## Images



### Western Blotting

**Image 1.** Western Blot analysis of Mouse brain tissue using TREM2 Polyclonal Antibody at dilution of 1:250