

Datasheet for ABIN7003146

**anti-RAN antibody****1** Image[Go to Product page](#)

## Overview

Quantity:	20 µL
Target:	RAN
Reactivity:	Human, Mouse, Rat
Host:	Rabbit
Clonality:	Polyclonal
Conjugate:	This RAN antibody is un-conjugated
Application:	Western Blotting (WB), ELISA

## Product Details

Immunogen:	Full length fusion protein
Isotype:	IgG
Characteristics:	Polyclonal Antibody
Purification:	Affinity purification

## Target Details

Target:	RAN
Alternative Name:	RAN ( <a href="#">RAN Products</a> )
Background:	RAN (ras-related nuclear protein) is a small GTP binding protein belonging to the RAS superfamily that is essential for the translocation of RNA and proteins through the nuclear pore complex. The RAN protein is also involved in control of DNA synthesis and cell cycle progression. Nuclear localization of RAN requires the presence of regulator of chromosome

## Target Details

	condensation 1 (RCC1). Mutations in RAN disrupt DNA synthesis.
Molecular Weight:	24 kDa
UniProt:	<a href="#">P62826</a>
Pathways:	<a href="#">Regulatory RNA Pathways</a> , <a href="#">Intracellular Steroid Hormone Receptor Signaling Pathway</a> , <a href="#">Protein targeting to Nucleus</a>

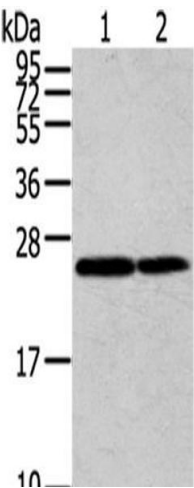
## Application Details

Application Notes:	WB 1:500-2000, ELISA 1:2000-5000
Restrictions:	For Research Use only

## Handling

Format:	Liquid
Concentration:	0.2 mg/mL
Buffer:	PBS with 0.05 % sodium azide and 50 % glycerol, PH7.4
Preservative:	Sodium azide
Precaution of Use:	This product contains Sodium azide: a POISONOUS AND HAZARDOUS SUBSTANCE which should be handled by trained staff only.
Storage:	-20 °C
Storage Comment:	Store at -20°C. Avoid freeze / thaw cycles.

## Images



### Western Blotting

**Image 1.** Western Blot analysis of Jurkat and Hela cells using RAN Polyclonal Antibody at dilution of 1/200