

Datasheet for ABIN7003231

anti-ARL2 antibody[Go to Product page](#)**1** Image

Overview

Quantity:	20 µL
Target:	ARL2
Reactivity:	Human, Mouse, Rat
Host:	Rabbit
Clonality:	Polyclonal
Conjugate:	This ARL2 antibody is un-conjugated
Application:	Western Blotting (WB), ELISA

Product Details

Immunogen:	Synthetic peptide of human ARL2
Isotype:	IgG
Characteristics:	Polyclonal Antibody
Purification:	Affinity purification

Target Details

Target:	ARL2
Alternative Name:	ARL2 (ARL2 Products)
Background:	This gene encodes a small GTP-binding protein of the RAS superfamily which functions as an ADP-ribosylation factor (ARF). The encoded protein is one of a functionally distinct group of ARF-like genes. Small GTP-binding protein which cycles between an inactive GDP-bound and an active GTP-bound form, and the rate of cycling is regulated by guanine nucleotide exchange

Target Details

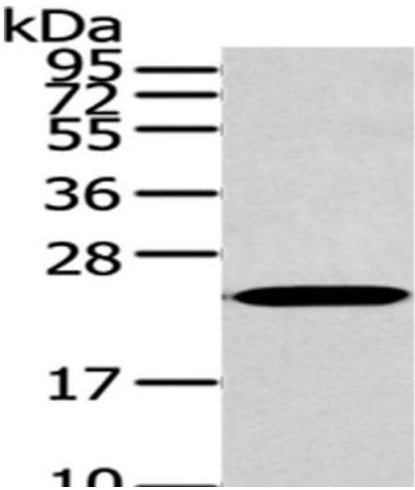
	factors (GEF) and GTPase-activating proteins (GAP). GTP-binding protein that does not act as an allosteric activator of the cholera toxin catalytic subunit.
Molecular Weight:	21 kDa
NCBI Accession:	NP_001658
UniProt:	P36404
Pathways:	Cell-Cell Junction Organization , Maintenance of Protein Location

Application Details

Application Notes:	WB 1:500-2000, ELISA 1:2000-5000
Restrictions:	For Research Use only

Handling

Format:	Liquid
Concentration:	0.3 mg/mL
Buffer:	PBS with 0.05 % sodium azide and 50 % glycerol, PH7.4
Preservative:	Sodium azide
Precaution of Use:	This product contains Sodium azide: a POISONOUS AND HAZARDOUS SUBSTANCE which should be handled by trained staff only.
Storage:	-20 °C
Storage Comment:	Store at -20°C. Avoid freeze / thaw cycles.



Western Blotting

Image 1. Western Blot analysis of 293T cells using ARL2 Polyclonal Antibody at dilution of 1/200