

Datasheet for ABIN7003267

anti-LTB4R2 antibody**1** Image[Go to Product page](#)

Overview

Quantity:	20 µL
Target:	LTB4R2
Reactivity:	Human, Mouse
Host:	Rabbit
Clonality:	Polyclonal
Conjugate:	This LTB4R2 antibody is un-conjugated
Application:	Western Blotting (WB), ELISA

Product Details

Immunogen:	Synthetic peptide of human LTB4R2
Isotype:	IgG
Characteristics:	Polyclonal Antibody
Purification:	Affinity purification

Target Details

Target:	LTB4R2
Alternative Name:	LTB4R2 (LTB4R2 Products)
Background:	Leukotriene B4 receptor 1 (LTB4R1), also designated P2Y purinoceptor 7, is a receptor for extracellular ATP, UTP and ADP. Through Human, Mouse modulation of L-type calcium currents, LTB4-R1 is involved in the regulation of cardiac muscle contraction. It is also a receptor for leukotriene B4 (LTB4), a potent chemoattractant involved in inflammation and immune

Target Details

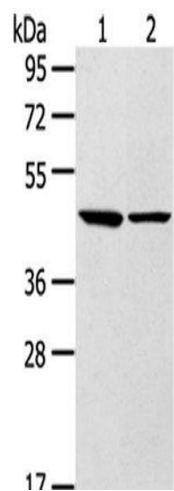
	response. Leukotriene B4 receptor 2 (LTB4R2) is a ubiquitously expressed 358-amino acid receptor for LTB4.
Molecular Weight:	42 kDa
NCBI Accession:	NP_001158164
UniProt:	Q9NPC1
Pathways:	cAMP Metabolic Process

Application Details

Application Notes:	WB 1:500-2000, ELISA 1:2000-5000
Restrictions:	For Research Use only

Handling

Format:	Liquid
Concentration:	0.5 mg/mL
Buffer:	PBS with 0.05 % sodium azide and 50 % glycerol, PH7.4
Preservative:	Sodium azide
Precaution of Use:	This product contains Sodium azide: a POISONOUS AND HAZARDOUS SUBSTANCE which should be handled by trained staff only.
Storage:	-20 °C
Storage Comment:	Store at -20°C. Avoid freeze / thaw cycles.



Western Blotting

Image 1. Western Blot analysis of Mouse brain and liver tissue using LTB4R2 Polyclonal Antibody at dilution of 1/250