

Datasheet for ABIN7003273

anti-RHCE antibody[Go to Product page](#)**1** Image

Overview

Quantity:	20 µL
Target:	RHCE
Reactivity:	Human
Host:	Rabbit
Clonality:	Polyclonal
Conjugate:	This RHCE antibody is un-conjugated
Application:	Western Blotting (WB), ELISA

Product Details

Immunogen:	Synthetic peptide of human RHCE
Isotype:	IgG
Characteristics:	Polyclonal Antibody
Purification:	Affinity purification

Target Details

Target:	RHCE
Alternative Name:	RHCE (RHCE Products)
Background:	The Rh blood group system is the second most clinically significant of the blood groups, second only to ABO. It is also the most polymorphic of the blood groups, with variations due to deletions, gene conversions, and missense mutations. The Rh blood group includes this gene which encodes both the RhC and RhE antigens on a single polypeptide and a second gene

Target Details

which encodes the RhD protein. The classification of Rh-positive and Rh-negative individuals is determined by the presence or absence of the highly immunogenic RhD protein on the surface of erythrocytes.

Molecular Weight: 46 kDa

NCBI Accession: [NP_065231](#)

UniProt: [P18577](#)

Application Details

Application Notes: WB 1:500-2000, ELISA 1:2000-5000

Restrictions: For Research Use only

Handling

Format: Liquid

Concentration: 0.3 mg/mL

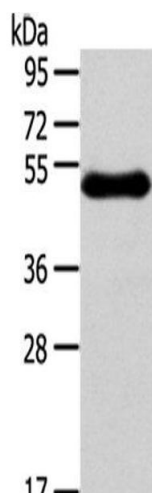
Buffer: PBS with 0.05 % sodium azide and 50 % glycerol, PH7.4

Preservative: Sodium azide

Precaution of Use: This product contains Sodium azide: a POISONOUS AND HAZARDOUS SUBSTANCE which should be handled by trained staff only.

Storage: -20 °C

Storage Comment: Store at -20°C. Avoid freeze / thaw cycles.



Western Blotting

Image 1. Western Blot analysis of Human breast infiltrative duct tissue using RHCE Polyclonal Antibody at dilution of 1/250