

Datasheet for ABIN7003274

anti-DEFB112 antibody**1** Image[Go to Product page](#)

Overview

Quantity:	20 µL
Target:	DEFB112
Reactivity:	Human
Host:	Rabbit
Clonality:	Polyclonal
Conjugate:	This DEFB112 antibody is un-conjugated
Application:	ELISA, Western Blotting (WB)

Product Details

Immunogen:	Synthetic peptide of human DEFB112
Isotype:	IgG
Characteristics:	Polyclonal Antibody
Purification:	Affinity purification

Target Details

Target:	DEFB112
Alternative Name:	DEFB112 (DEFB112 Products)
Background:	Defensins form a family of antimicrobial and cytotoxic peptides made by neutrophils. Defensins are short, processed peptide molecules that are classified by structure into three groups: alpha-defensins, beta-defensins and theta-defensins. All beta-defensin genes are densely clustered in four to five syntenic chromosomal regions.

Target Details

Molecular Weight:	13 kDa
NCBI Accession:	NP_001032587
UniProt:	Q30KQ8

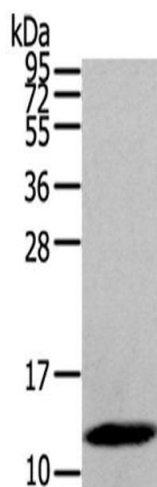
Application Details

Application Notes:	WB 1:500-2000, ELISA 1:2000-5000
Restrictions:	For Research Use only

Handling

Format:	Liquid
Concentration:	0.8 mg/mL
Buffer:	PBS with 0.05 % sodium azide and 50 % glycerol, PH7.4
Preservative:	Sodium azide
Precaution of Use:	This product contains Sodium azide: a POISONOUS AND HAZARDOUS SUBSTANCE which should be handled by trained staff only.
Storage:	-20 °C
Storage Comment:	Store at -20°C. Avoid freeze / thaw cycles.

Images



Western Blotting

Image 1. Western Blot analysis of Human placenta tissue using DEFB112 Polyclonal Antibody at dilution of 1/200