

Datasheet for ABIN7003285

anti-TSPYL1 antibody[Go to Product page](#)**1** Image

Overview

Quantity:	20 µL
Target:	TSPYL1
Reactivity:	Human, Mouse
Host:	Rabbit
Clonality:	Polyclonal
Conjugate:	This TSPYL1 antibody is un-conjugated
Application:	Western Blotting (WB), ELISA

Product Details

Immunogen:	Synthetic peptide of human TSPYL1
Isotype:	IgG
Characteristics:	Polyclonal Antibody
Purification:	Affinity purification

Target Details

Target:	TSPYL1
Alternative Name:	TSPYL1 (TSPYL1 Products)
Background:	The protein encoded by this gene is found in the nucleolus and is similar to that of a family of genes on the Y-chromosome. This gene is intronless. Defects in this gene are a cause of sudden infant death with dysgenesis of the testes syndrome (SIDDT).

Target Details

Molecular Weight:	49 kDa
NCBI Accession:	NP_003300
UniProt:	Q9H0U9

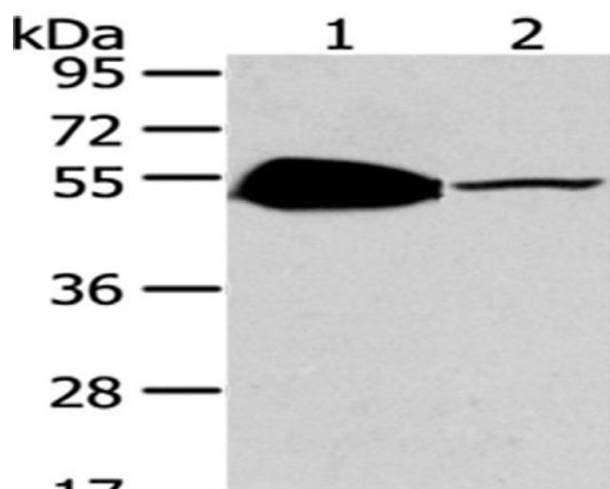
Application Details

Application Notes:	WB 1:500-2000, ELISA 1:2000-5000
Restrictions:	For Research Use only

Handling

Format:	Liquid
Concentration:	0.4 mg/mL
Buffer:	PBS with 0.05 % sodium azide and 50 % glycerol, PH7.4
Preservative:	Sodium azide
Precaution of Use:	This product contains Sodium azide: a POISONOUS AND HAZARDOUS SUBSTANCE which should be handled by trained staff only.
Storage:	-20 °C
Storage Comment:	Store at -20°C. Avoid freeze / thaw cycles.

Images



Western Blotting

Image 1. Western Blot analysis of Mouse brain and heart tissue using TSPYL1 Polyclonal Antibody at dilution of 1/200