

Datasheet for ABIN7003336

anti-RHOU antibody[Go to Product page](#)**1** Image

Overview

| | |
|--------------|-------------------------------------|
| Quantity: | 20 µL |
| Target: | RHOU |
| Reactivity: | Human, Mouse |
| Host: | Rabbit |
| Clonality: | Polyclonal |
| Conjugate: | This RHOU antibody is un-conjugated |
| Application: | ELISA, Western Blotting (WB) |

Product Details

| | |
|------------------|---------------------------------|
| Immunogen: | Synthetic peptide of human RHOU |
| Isotype: | IgG |
| Characteristics: | Polyclonal Antibody |
| Purification: | Affinity purification |

Target Details

| | |
|-------------------|--------------------------------------------------------------------------------------------------------------------------------------------------------------------------------------------------------------------------------------------------------------------------------------------------------------------------------------------------------------------------|
| Target: | RHOU |
| Alternative Name: | RHOU (RHOU Products) |
| Background: | This gene encodes a member of the Rho family of GTPases. This protein can activate PAK1 and JNK1, and can induce filopodium formation and stress fiber dissolution. It may also mediate the effects of WNT1 signaling in the regulation of cell morphology, cytoskeletal organization, and cell proliferation. A non-coding transcript variant of this gene results from |

Target Details

naturally occurring read-through transcription between this locus and the neighboring DUSP5P (dual specificity phosphatase 5 pseudogene) locus.

| | |
|-------------------|---------------------------|
| Molecular Weight: | 28 kDa |
| NCBI Accession: | NP_067028 |
| UniProt: | Q7L0Q8 |

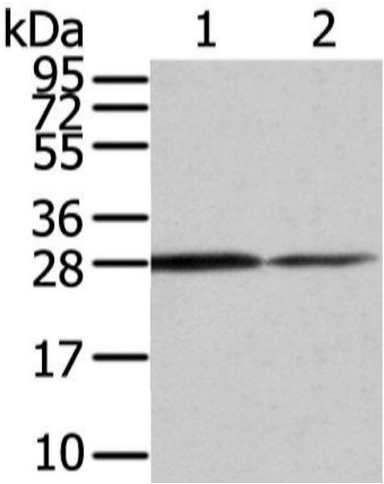
Application Details

| | |
|--------------------|----------------------------------|
| Application Notes: | WB 1:500-2000, ELISA 1:2000-5000 |
| Restrictions: | For Research Use only |

Handling

| | |
|--------------------|------------------------------------------------------------------------------------------------------------------------|
| Format: | Liquid |
| Concentration: | 0.3 mg/mL |
| Buffer: | PBS with 0.05 % sodium azide and 50 % glycerol, PH7.4 |
| Preservative: | Sodium azide |
| Precaution of Use: | This product contains Sodium azide: a POISONOUS AND HAZARDOUS SUBSTANCE which should be handled by trained staff only. |
| Storage: | -20 °C |
| Storage Comment: | Store at -20°C. Avoid freeze / thaw cycles. |

Images



Western Blotting

Image 1. Western Blot analysis of Mouse stomach and Human fetal muscle tissue using RHOU Polyclonal Antibody at dilution of 1/200