

Datasheet for ABIN7003349

**anti-CBX7 antibody**[Go to Product page](#)**1** Image

## Overview

Quantity:	20 µL
Target:	CBX7
Reactivity:	Human, Mouse, Rat
Host:	Rabbit
Clonality:	Polyclonal
Conjugate:	This CBX7 antibody is un-conjugated
Application:	Western Blotting (WB), ELISA

## Product Details

Immunogen:	Synthetic peptide of human CBX7
Isotype:	IgG
Characteristics:	Polyclonal Antibody
Purification:	Affinity purification

## Target Details

Target:	CBX7
Alternative Name:	CBX7 ( <a href="#">CBX7 Products</a> )
Background:	CBX7 (Chromobox protein homolog 7) is a 251 amino acid nuclear protein that contains one N-terminal chromo domain and one C-terminal Pc box. Highly expressed in kidney, brain, heart and skeletal muscle, with weaker expression in peripheral blood leukocytes, CBX7 functions as a component of the chromatin-associated polycomb complex (PcG) and is involved in

Target Details

	maintaining the transcriptionally repressed state of target genes.
Molecular Weight:	28 kDa
NCBI Accession:	<a href="#">NP_783640</a>
UniProt:	<a href="#">O95931</a>

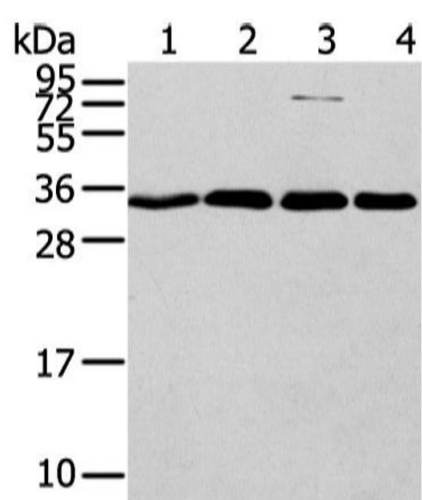
Application Details

Application Notes:	WB 1:500-2000, ELISA 1:2000-5000
Restrictions:	For Research Use only

Handling

Format:	Liquid
Concentration:	0.4 mg/mL
Buffer:	PBS with 0.05 % sodium azide and 50 % glycerol, PH7.4
Preservative:	Sodium azide
Precaution of Use:	This product contains Sodium azide: a POISONOUS AND HAZARDOUS SUBSTANCE which should be handled by trained staff only.
Storage:	-20 °C
Storage Comment:	Store at -20°C. Avoid freeze / thaw cycles.

Images



Western Blotting

**Image 1.** Western Blot analysis of Hela, Jurkat, 293T and lovo cell using CBX7 Polyclonal Antibody at dilution of 1/200