



[Go to Product page](#)

Datasheet for ABIN7003416
anti-CDC20B antibody

1 Image

Overview

Quantity:	20 µL
Target:	CDC20B
Reactivity:	Human
Host:	Rabbit
Clonality:	Polyclonal
Conjugate:	This CDC20B antibody is un-conjugated
Application:	ELISA, Immunohistochemistry (IHC)

Product Details

Immunogen:	Synthetic peptide of human CDC20B
Isotype:	IgG
Characteristics:	Polyclonal Antibody
Purification:	Antigen affinity purification

Target Details

Target:	CDC20B
Alternative Name:	CDC20B (CDC20B Products)
Background:	WD-repeats are motifs that are found in a variety of proteins and are characterized by a conserved core of 40-60 amino acids that commonly form a tertiary propeller structure. While proteins that contain WD-repeats participate in a wide range of cellular functions, they are generally involved in regulatory mechanisms concerning chromatin assembly, cell cycle control,

Target Details

signal transduction, RNA processing, apoptosis and vesicular trafficking. Cdc20B (cell division cycle 20 homolog B) is a 519 amino acid protein that contains seven WD repeats and is thought to play a role in cell cycle control. Multiple isoforms of Cdc20B exist due to alternative splicing events. The gene encoding Cdc20B maps to human chromosome 5, which contains 181 million base pairs and comprises nearly 6 % of the human genome. Deletion of the p arm of chromosome 5 leads to Cri du chat syndrome, while deletion of the q arm or of chromosome 5 altogether is common in therapy-related acute myelogenous leukemias and myelodysplastic syndrome.

UniProt: [Q86Y33](#)

Application Details

Application Notes: IHC 1:30-1:150, ELISA 1:5000-1:10000

Restrictions: For Research Use only

Handling

Format: Liquid

Concentration: 0.7 mg/mL

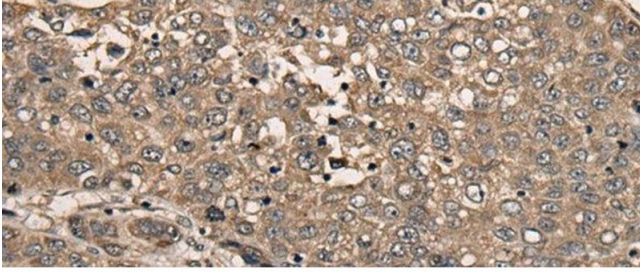
Buffer: PBS with 0.05 % Sodium azide and 40 % Glycerol, pH 7.4

Preservative: Sodium azide

Precaution of Use: This product contains Sodium azide: a POISONOUS AND HAZARDOUS SUBSTANCE which should be handled by trained staff only.

Storage: -20 °C

Storage Comment: Store at -20°C. Avoid freeze / thaw cycles.



Immunohistochemistry (Paraffin-embedded Sections)

Image 1. Immunohistochemistry of paraffin-embedded Human liver cancer tissue using CDC20B Polyclonal Antibody at dilution of 1:30(x200)