



Datasheet for ABIN7003436  
**anti-ARIH1 antibody**



[Go to Product page](#)

1 Image

### Overview

Quantity:	20 µL
Target:	ARIH1
Reactivity:	Human, Mouse
Host:	Rabbit
Clonality:	Polyclonal
Conjugate:	This ARIH1 antibody is un-conjugated
Application:	ELISA, Immunohistochemistry (IHC)

### Product Details

Immunogen:	Synthetic peptide of human ARIH1
Isotype:	IgG
Characteristics:	Polyclonal Antibody
Purification:	Antigen affinity purification

### Target Details

Target:	ARIH1
Alternative Name:	ARIH1 ( <a href="#">ARIH1 Products</a> )
Background:	ARIH1 (ariadne homolog), also known as ubiquitin conjugating enzyme E2 binding protein 1, ARI, HARI, HHARI (human homolog of Drosophila ariadne), MOP-6 (monocyte protein 6) or UBCH7BP (UBCH7 binding protein), is a 557 amino acid cytoplasmic protein. Expressed in a wide variety of tissues, ARIH1 contains two RING-type zinc fingers and one IBR (in-between

## Target Details

---

RING fingers)-type domain. ARIH1 is believed to be involved in protein degradation and protein translation. ARIH1 interacts with UBCH7 and is thought to function as an E3 ubiquitin-protein ligase (or as a component of an E3 complex) that, characteristic of E3 ligase proteins, accepts ubiquitin (in the form of a thioester) from an E2 ubiquitin-conjugating enzyme (UBCH7) and transfers that ubiquitin residue to substrates targeted for degradation. Specifically, ARIH1 interacts with and polyubiquitylates eIF4E2, thereby targeting it for proteasomal degradation.

UniProt: [Q9Y4X5](#)

## Application Details

---

Application Notes: IHC 1:50-1:100, ELISA 1:5000-1:10000

Restrictions: For Research Use only

## Handling

---

Format: Liquid

Concentration: 0.9 mg/mL

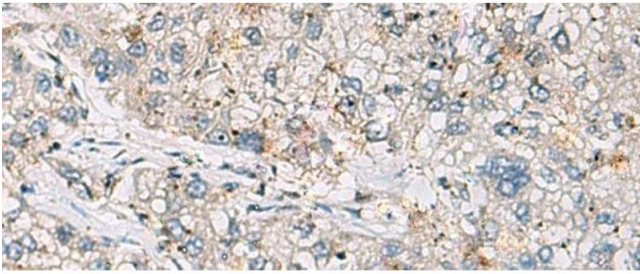
Buffer: PBS with 0.05 % Sodium azide and 40 % Glycerol, pH 7.4

Preservative: Sodium azide

Precaution of Use: This product contains Sodium azide: a POISONOUS AND HAZARDOUS SUBSTANCE which should be handled by trained staff only.

Storage: -20 °C

Storage Comment: Store at -20°C. Avoid freeze / thaw cycles.



#### Immunohistochemistry (Paraffin-embedded Sections)

**Image 1.** Immunohistochemistry of paraffin-embedded Human liver cancer tissue using ARIH1 Polyclonal Antibody at dilution of 1:30(x200)