



[Go to Product page](#)

Datasheet for ABIN7003482  
**anti-EPB41L4B antibody**

1 Image

### Overview

Quantity:	20 µL
Target:	EPB41L4B
Reactivity:	Human
Host:	Rabbit
Clonality:	Polyclonal
Conjugate:	This EPB41L4B antibody is un-conjugated
Application:	ELISA, Immunohistochemistry (IHC)

### Product Details

Immunogen:	Synthetic peptide of human EPB41L4B
Isotype:	IgG
Characteristics:	Polyclonal Antibody
Purification:	Antigen affinity purification

### Target Details

Target:	EPB41L4B
Alternative Name:	EPB41L4B ( <a href="#">EPB41L4B Products</a> )
Background:	Up-regulates the activity of the Rho guanine nucleotide exchange factor ARHGEF18 (By similarity). Involved in the regulation of the circumferential actomyosin belt in epithelial cells (PubMed:22006950). Promotes cellular adhesion, migration and motility in vitro and may play a role in wound healing (PubMed:23664528). May have a role in mediating cytoskeletal changes

## Target Details

associated with steroid-induced cell differentiation (PubMed:14521927).

UniProt: [Q9H329](#)

## Application Details

Application Notes: IHC 1:30-1:150, ELISA 1:5000-1:10000

Restrictions: For Research Use only

## Handling

Format: Liquid

Concentration: 1.38 mg/mL

Buffer: PBS with 0.05 % Sodium azide and 40 % Glycerol, pH 7.4

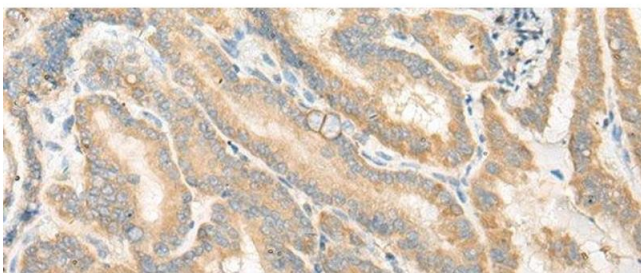
Preservative: Sodium azide

Precaution of Use: This product contains Sodium azide: a POISONOUS AND HAZARDOUS SUBSTANCE which should be handled by trained staff only.

Storage: -20 °C

Storage Comment: Store at -20°C. Avoid freeze / thaw cycles.

## Images



### Immunohistochemistry (Paraffin-embedded Sections)

**Image 1.** Immunohistochemistry of paraffin-embedded Human thyroid cancer tissue using EPB41L4B Polyclonal Antibody at dilution of 1:35(x200)