



Datasheet for ABIN7003494

## anti-IL-26 antibody



[Go to Product page](#)

### 1 Image

#### Overview

Quantity:	20 µL
Target:	IL-26 (IL26)
Reactivity:	Human
Host:	Rabbit
Clonality:	Polyclonal
Conjugate:	This IL-26 antibody is un-conjugated
Application:	ELISA, Immunohistochemistry (IHC)

#### Product Details

Immunogen:	Synthetic peptide of human IL26
Isotype:	IgG
Characteristics:	Polyclonal Antibody
Purification:	Antigen affinity purification

#### Target Details

Target:	IL-26 (IL26)
Alternative Name:	IL26 ( <a href="#">IL26 Products</a> )
Background:	IL26 (Interleukin 26) is a Protein Coding gene. Among its related pathways are PEDF Induced Signaling and TGF-Beta Pathway. GO annotations related to this gene include cytokine activity. This gene was identified by its overexpression specifically in herpesvirus samimiri-transformed T cells. The encoded protein is a member of the IL10 family of cytokines. It is a

## Target Details

secreted protein and may function as a homodimer. This protein is thought to contribute to the transformed phenotype of T cells after infection by herpesvirus samimiri.

UniProt: [Q9NPH9](#)

## Application Details

Application Notes: IHC 1:30-1:150, ELISA 1:5000-1:10000

Restrictions: For Research Use only

## Handling

Format: Liquid

Concentration: 0.84 mg/mL

Buffer: PBS with 0.05 % Sodium azide and 40 % Glycerol, pH 7.4

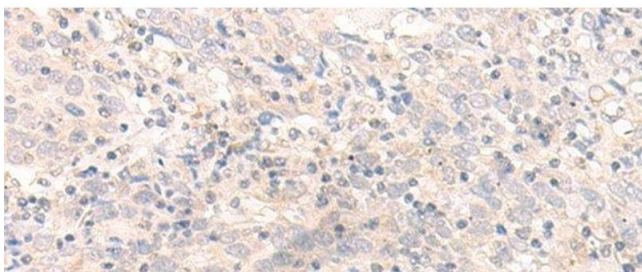
Preservative: Sodium azide

Precaution of Use: This product contains Sodium azide: a POISONOUS AND HAZARDOUS SUBSTANCE which should be handled by trained staff only.

Storage: -20 °C

Storage Comment: Store at -20°C. Avoid freeze / thaw cycles.

## Images



### Immunohistochemistry (Paraffin-embedded Sections)

**Image 1.** Immunohistochemistry of paraffin-embedded Human cervical cancer tissue using IL26 Polyclonal Antibody at dilution of 1:30(x200)