



## Datasheet for ABIN7003516 anti-FAM111B antibody



[Go to Product page](#)

### 1 Image

#### Overview

Quantity:	20 µL
Target:	FAM111B
Reactivity:	Human
Host:	Rabbit
Clonality:	Polyclonal
Conjugate:	This FAM111B antibody is un-conjugated
Application:	ELISA, Immunohistochemistry (IHC)

#### Product Details

Immunogen:	Synthetic peptide of human FAM111B
Isotype:	IgG
Characteristics:	Polyclonal Antibody
Purification:	Antigen affinity purification

#### Target Details

Target:	FAM111B
Alternative Name:	FAM111B ( <a href="#">FAM111B Products</a> )
Background:	This gene encodes a protein with a trypsin-like cysteine/serine peptidase domain in the C-terminus. Mutations in this gene are associated with an autosomal dominant form of hereditary fibrosing poikiloderma (HFP). Affected individuals display mottled pigmentation, telangiectasia, epidermal atrophy, tendon contractures, and progressive pulmonary fibrosis. Alternative

## Target Details

---

splicing results in multiple transcript variants encoding distinct isoforms. A paralog of this gene which also has a trypsin-,like peptidase domain, FAM111A, is located only 16 kb from this gene on human chromosome 11q12.1.

UniProt: [Q6SJ93](#)

## Application Details

---

Application Notes: IHC 1:30-1:150, ELISA 1:5000-1:10000

Restrictions: For Research Use only

## Handling

---

Format: Liquid

Concentration: 0.66 mg/mL

Buffer: PBS with 0.05 % Sodium azide and 40 % Glycerol, pH 7.4

Preservative: Sodium azide

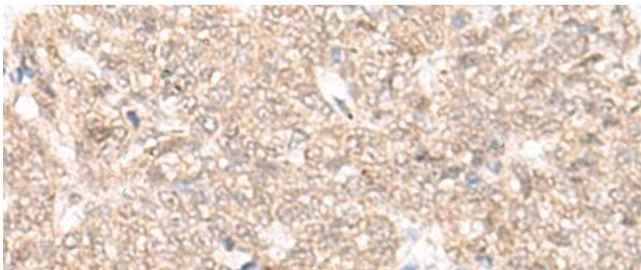
Precaution of Use: This product contains Sodium azide: a POISONOUS AND HAZARDOUS SUBSTANCE which should be handled by trained staff only.

Storage: -20 °C

Storage Comment: Store at -20°C. Avoid freeze / thaw cycles.

## Images

---



### Immunohistochemistry (Paraffin-embedded Sections)

**Image 1.** Immunohistochemistry of paraffin-embedded Human ovarian cancer tissue using FAM111B Polyclonal Antibody at dilution of 1:25(x200)