



## Datasheet for ABIN7003565 anti-SLC41A3 antibody



[Go to Product page](#)

### 1 Image

#### Overview

|              |  |
|--------------|--|
| Quantity:    | 20 µL                                  |
| Target:      | SLC41A3                                |
| Reactivity:  | Human                                  |
| Host:        | Rabbit                                 |
| Clonality:   | Polyclonal                             |
| Conjugate:   | This SLC41A3 antibody is un-conjugated |
| Application: | ELISA, Immunohistochemistry (IHC)      |

#### Product Details

|                  |                                    |
|------------------|------------------------------------|
| Immunogen:       | Synthetic peptide of human SLC41A3 |
| Isotype:         | IgG                                |
| Characteristics: | Polyclonal Antibody                |
| Purification:    | Antigen affinity purification      |

#### Target Details

|                   |   |
|-------------------|---|
| Target:           | SLC41A3   |
| Alternative Name: | SLC41A3 ( <a href="#">SLC41A3 Products</a> )  |
| Background:       | SLC41A3 (solute carrier family 41 member 3) is a 507 amino acid multi-pass membrane protein that belongs to the SLC41A transporter family that includes SLC41A1 and SLC41A2. Localizing to the cell membrane, SLC41A3 contains ten transmembrane domains and is believed to function as a plasma-membrane cation transporter. Its other two family members, SLC41A1 |

## Target Details

and SLC41A2, have been characterized to function as magnesium transporters and are essential for maintaining magnesium homeostasis within the cell.

UniProt: [Q96GZ6](#)

## Application Details

Application Notes: IHC 1:30-1:150, ELISA 1:5000-1:10000

Restrictions: For Research Use only

## Handling

Format: Liquid

Concentration: 0.96 mg/mL

Buffer: PBS with 0.05 % Sodium azide and 40 % Glycerol, pH 7.4

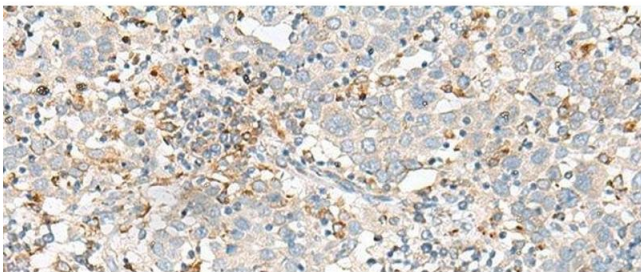
Preservative: Sodium azide

Precaution of Use: This product contains Sodium azide: a POISONOUS AND HAZARDOUS SUBSTANCE which should be handled by trained staff only.

Storage: -20 °C

Storage Comment: Store at -20°C. Avoid freeze / thaw cycles.

## Images



### Immunohistochemistry (Paraffin-embedded Sections)

**Image 1.** Immunohistochemistry of paraffin-embedded Human cervical cancer tissue using SLC41A3 Polyclonal Antibody at dilution of 1:35(x200)