

Datasheet for ABIN7003647

**anti-SIX Homeobox 6 antibody**[Go to Product page](#)**1** Image

## Overview

|              |   |
|--------------|---|
| Quantity:    | 20 µL   |
| Target:      | SIX Homeobox 6 (SIX6)                         |
| Reactivity:  | Human, Mouse                                  |
| Host:        | Rabbit  |
| Clonality:   | Polyclonal                                    |
| Conjugate:   | This SIX Homeobox 6 antibody is un-conjugated |
| Application: | ELISA, Immunohistochemistry (IHC)             |

## Product Details

|                  |                                 |
|------------------|---------------------------------|
| Immunogen:       | Synthetic peptide of human SIX6 |
| Isotype:         | IgG                             |
| Characteristics: | Polyclonal Antibody             |
| Purification:    | Antigen affinity purification   |

## Target Details

|                   |   |
|-------------------|---|
| Target:           | SIX Homeobox 6 (SIX6)   |
| Alternative Name: | SIX6 ( <a href="#">SIX6 Products</a> )  |
| Background:       | The protein encoded by this gene is a homeobox protein that is similar to the Drosophila 'sine oculis' gene product. This gene is found in a cluster of related genes on chromosome 14 and is thought to be involved in eye development. Defects in this gene are a cause of isolated microphthalmia with cataract type 2 (MCOPCT2).SIX6 (SIX Homeobox 6) is a Protein Coding |

## Target Details

gene. Diseases associated with SIX6 include Optic Disc Anomalies With Retinal And/Or Macular Dystrophy and Six6-Related Eye Disorders. Among its related pathways are Ectoderm Differentiation. GO annotations related to this gene include transcriptional activator activity, RNA polymerase II distal enhancer sequence-specific binding. An important paralog of this gene is SIX3.

UniProt: [O95475](#)

## Application Details

Application Notes: IHC 1:30-1:150, ELISA 1:5000-1:10000

Restrictions: For Research Use only

## Handling

Format: Liquid

Concentration: 0.84 mg/mL

Buffer: PBS with 0.05 % Sodium azide and 40 % Glycerol, pH 7.4

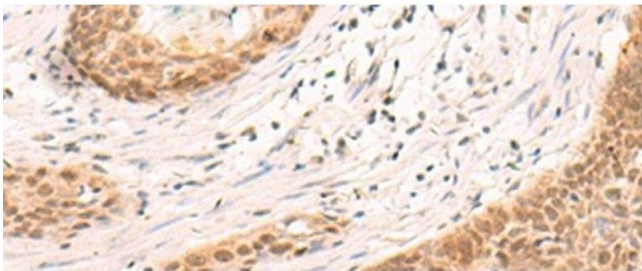
Preservative: Sodium azide

Precaution of Use: This product contains Sodium azide: a POISONOUS AND HAZARDOUS SUBSTANCE which should be handled by trained staff only.

Storage: -20 °C

Storage Comment: Store at -20°C. Avoid freeze / thaw cycles.

## Images



### Immunohistochemistry (Paraffin-embedded Sections)

**Image 1.** Immunohistochemistry of paraffin-embedded Human esophagus cancer tissue using SIX6 Polyclonal Antibody at dilution of 1:30(x200)