



[Go to Product page](#)

Datasheet for ABIN7003653

anti-HSH2D antibody

1 Image

Overview

Quantity:	20 µL
Target:	HSH2D
Reactivity:	Human
Host:	Rabbit
Clonality:	Polyclonal
Conjugate:	This HSH2D antibody is un-conjugated
Application:	ELISA, Immunohistochemistry (IHC)

Product Details

Immunogen:	Synthetic peptide of human HSH2D
Isotype:	IgG
Characteristics:	Polyclonal Antibody
Purification:	Antigen affinity purification

Target Details

Target:	HSH2D
Alternative Name:	HSH2D (HSH2D Products)
Background:	T-cell activation requires 2 signals: recognition of antigen by the T-cell receptor (see TCR, MIM 186880) and a costimulatory signal provided primarily by CD28 (MIM 186760) in naive T cells. HSH2 is a target of both of these signaling pathways (Greene et al., 2003 [PubMed 12960172]).

Target Details

UniProt: [Q96JZ2](#)

Application Details

Application Notes: IHC 1:30-1:150, ELISA 1:5000-1:10000

Restrictions: For Research Use only

Handling

Format: Liquid

Concentration: 0.66 mg/mL

Buffer: PBS with 0.05 % Sodium azide and 40 % Glycerol, pH 7.4

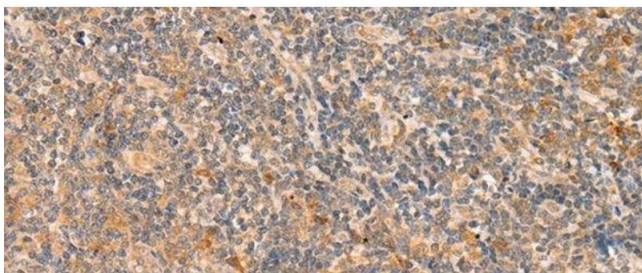
Preservative: Sodium azide

Precaution of Use: This product contains Sodium azide: a POISONOUS AND HAZARDOUS SUBSTANCE which should be handled by trained staff only.

Storage: -20 °C

Storage Comment: Store at -20°C. Avoid freeze / thaw cycles.

Images



Immunohistochemistry (Paraffin-embedded Sections)

Image 1. Immunohistochemistry of paraffin-embedded Human tonsil tissue using HSH2D Polyclonal Antibody at dilution of 1:25(x200)