



[Go to Product page](#)

Datasheet for ABIN7003817

anti-WISP3 antibody

1 Image

Overview

Quantity:	20 µL
Target:	WISP3
Reactivity:	Human, Mouse
Host:	Rabbit
Clonality:	Polyclonal
Conjugate:	This WISP3 antibody is un-conjugated
Application:	Western Blotting (WB), ELISA

Product Details

Immunogen:	Fusion protein of human WISP3
Isotype:	IgG
Characteristics:	Polyclonal Antibody
Purification:	Antigen affinity purification

Target Details

Target:	WISP3
Alternative Name:	WISP3 (WISP3 Products)
Background:	WISP3 (WNT1 Inducible Signaling Pathway Protein 3) is a Protein Coding gene. Diseases associated with WISP3 include Arthropathy, Progressive Pseudorheumatoid, Of Childhood and Arthropathy. GO annotations related to this gene include growth factor activity and integrin binding. An important paralog of this gene is WISP1. This gene encodes a member of the WNT1

Target Details

inducible signaling pathway (WISP) protein subfamily, which belongs to the connective tissue growth factor (CTGF) family. WNT1 is a member of a family of cysteine-rich, glycosylated signaling proteins that mediate diverse developmental processes. The CTGF family members are characterized by four conserved cysteine-rich domains: insulin-like growth factor-binding domain, von Willebrand factor type C module, thrombospondin domain and C-terminal cystine knot-like domain. This gene is overexpressed in colon tumors. It may be downstream in the WNT1 signaling pathway that is relevant to malignant transformation. Mutations of this gene are associated with progressive pseudorheumatoid dysplasia, an autosomal recessive skeletal disorder, indicating that the gene is essential for normal postnatal skeletal growth and cartilage homeostasis. Multiple transcript variants encoding different isoforms have been found for this gene.

Molecular Weight: Observed_MW: Refer to figures
Calculated_MW: 39 kDa

UniProt: [O95389](#)

Pathways: [WNT Signaling](#), [Growth Factor Binding](#)

Application Details

Application Notes: WB 1:500-1:2000, ELISA 1:5000-1:10000

Restrictions: For Research Use only

Handling

Format: Liquid

Concentration: 0.4 mg/mL

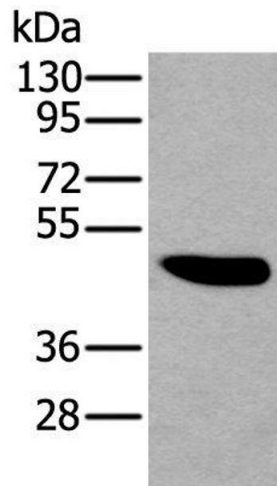
Buffer: PBS with 0.05 % Sodium azide and 40 % Glycerol, pH 7.4

Preservative: Sodium azide

Precaution of Use: This product contains Sodium azide: a POISONOUS AND HAZARDOUS SUBSTANCE which should be handled by trained staff only.

Storage: -20 °C

Storage Comment: Store at -20°C. Avoid freeze / thaw cycles.



Western Blotting

Image 1. Western blot analysis of TM4 cell lysate using WISP3 Polyclonal Antibody at dilution of 1:200