

Datasheet for ABIN7003818

anti-WSB1 antibody**1** Image[Go to Product page](#)

Overview

Quantity:	20 µL
Target:	WSB1
Reactivity:	Human, Mouse
Host:	Rabbit
Clonality:	Polyclonal
Conjugate:	This WSB1 antibody is un-conjugated
Application:	Western Blotting (WB), ELISA

Product Details

Immunogen:	Fusion protein of human WSB1
Isotype:	IgG
Characteristics:	Polyclonal Antibody
Purification:	Antigen affinity purification

Target Details

Target:	WSB1
Alternative Name:	WSB1 (WSB1 Products)
Background:	This gene encodes a member of the WD-protein subfamily. This protein shares a high sequence identity to mouse and chick proteins. It contains several WD-repeats spanning most of the protein and an SOCS box in the C-terminus. Alternatively spliced transcript variants encoding distinct isoforms have been found for this gene.

Target Details

Molecular Weight:	Observed_MW: Refer to figures
	Calculated_MW: 47 kDa
UniProt:	Q9Y6I7

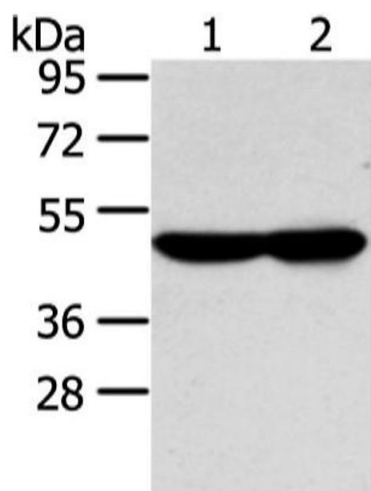
Application Details

Application Notes:	WB 1:500-1:2000, ELISA 1:2000-1:5000
Restrictions:	For Research Use only

Handling

Format:	Liquid
Concentration:	0.5 mg/mL
Buffer:	PBS with 0.05 % Sodium azide and 40 % Glycerol, pH 7.4
Preservative:	Sodium azide
Precaution of Use:	This product contains Sodium azide: a POISONOUS AND HAZARDOUS SUBSTANCE which should be handled by trained staff only.
Storage:	-20 °C
Storage Comment:	Store at -20°C. Avoid freeze / thaw cycles.

Images



Western Blotting

Image 1. Western blot analysis of TM4 and NIH/3T3 cell using WSB1 Polyclonal Antibody at dilution of 1:350