

Datasheet for ABIN7003849

anti-RSPH1 antibody[Go to Product page](#)**1** Image

Overview

Quantity:	20 µL
Target:	RSPH1
Reactivity:	Human
Host:	Rabbit
Clonality:	Polyclonal
Conjugate:	This RSPH1 antibody is un-conjugated
Application:	Western Blotting (WB), ELISA

Product Details

Immunogen:	Fusion protein of human RSPH1
Isotype:	IgG
Characteristics:	Polyclonal Antibody
Purification:	Antigen affinity purification

Target Details

Target:	RSPH1
Alternative Name:	RSPH1 (RSPH1 Products)
Background:	This gene encodes a male meiotic metaphase chromosome-associated acidic protein. This gene is expressed in tissues with motile cilia or flagella, including the trachea, lungs, airway brushings, and testes. Mutations in this gene result in primary ciliary dyskinesia-24. Alternatively spliced transcript variants encoding different isoforms have been found for this gene.

Target Details

Molecular Weight: Observed_MW: Refer to figures
Calculated_MW: 35 kDa

UniProt: [Q8WYR4](#)

Application Details

Application Notes: WB 1:500-1:2000, ELISA 1:5000-1:10000

Restrictions: For Research Use only

Handling

Format: Liquid

Concentration: 0.8 mg/mL

Buffer: PBS with 0.05 % Sodium azide and 40 % Glycerol, pH 7.4

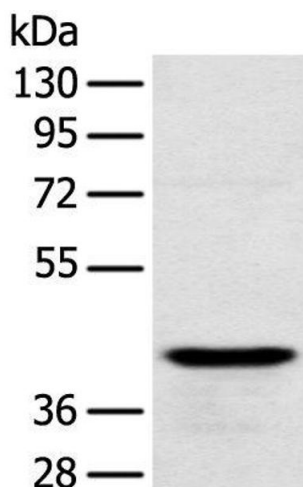
Preservative: Sodium azide

Precaution of Use: This product contains Sodium azide: a POISONOUS AND HAZARDOUS SUBSTANCE which should be handled by trained staff only.

Storage: -20 °C

Storage Comment: Store at -20°C. Avoid freeze / thaw cycles.

Images



Western Blotting

Image 1. Western blot analysis of Human testis tissue using RSPH1 Polyclonal Antibody at dilution of 1:250