



Datasheet for ABIN7003959  
**anti-CAGE1 antibody**



[Go to Product page](#)

1 Image

Overview

Quantity:	20 µL
Target:	CAGE1
Reactivity:	Human
Host:	Rabbit
Clonality:	Polyclonal
Conjugate:	This CAGE1 antibody is un-conjugated
Application:	ELISA, Immunohistochemistry (IHC)

Product Details

Immunogen:	Fusion protein of human CAGE1
Isotype:	IgG
Characteristics:	Polyclonal Antibody
Purification:	Antigen affinity purification

Target Details

Target:	CAGE1
Alternative Name:	CAGE1 ( <a href="#">CAGE1 Products</a> )
Background:	CAGE1, also known as CT3, CT95, CTAG3, bA69L16.7, is a 639-amino acid protein. It shares 76 % sequence identity with a monkey homolog. RT-PCR analysis detected testis-specific expression among normal tissues and wide expression among various cancer tissues and cancer cell lines including those from cervical, melanoma, hepatic, renal, myeloma, and breast

## Target Details

cancers. CTAG3 was overexpressed in cancer tissues compared with surrounding noncancerous tissues. Transfection experiments with a GFP-CTAG3 construct indicated a predominantly nuclear localization.

UniProt: [Q8TC20](#)

## Application Details

Application Notes: IHC 1:30-1:150, ELISA 1:5000-1:10000

Restrictions: For Research Use only

## Handling

Format: Liquid

Concentration: 0.6 mg/mL

Buffer: PBS with 0.05 % Sodium azide and 40 % Glycerol, pH 7.4

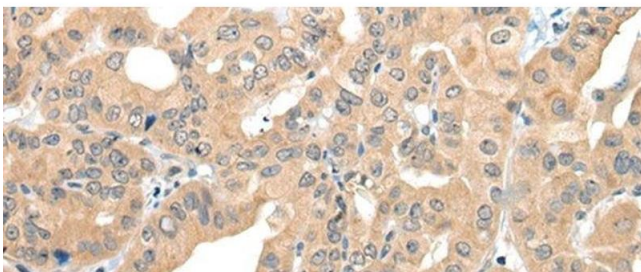
Preservative: Sodium azide

Precaution of Use: This product contains Sodium azide: a POISONOUS AND HAZARDOUS SUBSTANCE which should be handled by trained staff only.

Storage: -20 °C

Storage Comment: Store at -20°C. Avoid freeze / thaw cycles.

## Images



### Immunohistochemistry (Paraffin-embedded Sections)

**Image 1.** Immunohistochemistry of paraffin-embedded Human thyroid cancer tissue using CAGE1 Polyclonal Antibody at dilution of 1:35(x200)