

Datasheet for ABIN7003988  
**anti-CYP3A4 antibody**



[Go to Product page](#)

1 Image

## Overview

Quantity:	20 µL
Target:	CYP3A4
Reactivity:	Human
Host:	Rabbit
Clonality:	Polyclonal
Conjugate:	This CYP3A4 antibody is un-conjugated
Application:	ELISA, Immunohistochemistry (IHC)

## Product Details

Immunogen:	Fusion protein of human CYP3A43
Isotype:	IgG
Characteristics:	Polyclonal Antibody
Purification:	Antigen affinity purification

## Target Details

Target:	CYP3A4
Alternative Name:	CYP3A43 ( <a href="#">CYP3A4 Products</a> )
Background:	This gene encodes a member of the cytochrome P450 superfamily of enzymes. The cytochrome P450 proteins are monooxygenases which catalyze many reactions involved in drug metabolism and synthesis of cholesterol, steroids and other lipids. The encoded protein has a low level of testosterone hydroxylase activity, and may play a role in aging mechanisms

## Target Details

and cancer progression. This gene is part of a cluster of cytochrome P450 genes on chromosome 7q21.1. Alternate splicing results in multiple transcript variants encoding different isoforms.

UniProt:	<a href="#">Q9HB55</a>
Pathways:	<a href="#">Steroid Hormone Biosynthesis</a>

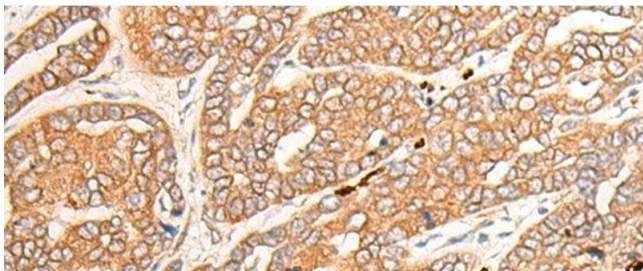
## Application Details

Application Notes:	IHC 1:30-1:150, ELISA 1:5000-1:10000
Restrictions:	For Research Use only

## Handling

Format:	Liquid
Concentration:	0.84 mg/mL
Buffer:	PBS with 0.05 % Sodium azide and 40 % Glycerol, pH 7.4
Preservative:	Sodium azide
Precaution of Use:	This product contains Sodium azide: a POISONOUS AND HAZARDOUS SUBSTANCE which should be handled by trained staff only.
Storage:	-20 °C
Storage Comment:	Store at -20°C. Avoid freeze / thaw cycles.

## Images



### Immunohistochemistry (Paraffin-embedded Sections)

**Image 1.** Immunohistochemistry of paraffin-embedded Human liver cancer tissue using CYP3A43 Polyclonal Antibody at dilution of 1:30(x200)