



[Go to Product page](#)

Datasheet for ABIN7004003

anti-ERP27 antibody

1 Image

Overview

Quantity:	20 µL
Target:	ERP27
Reactivity:	Human
Host:	Rabbit
Clonality:	Polyclonal
Conjugate:	This ERP27 antibody is un-conjugated
Application:	ELISA, Immunohistochemistry (IHC)

Product Details

Immunogen:	Fusion protein of human ERP27
Isotype:	IgG
Characteristics:	Polyclonal Antibody
Purification:	Antigen affinity purification

Target Details

Target:	ERP27
Alternative Name:	ERP27 (ERP27 Products)
Background:	ERP27 is a noncatalytic member of the protein disulfide isomerase (PDI, see MIM 608012) family of endoplasmic reticulum (ER) proteins (Alanen et al., 2006 [PubMed 16940051]).
UniProt:	Q96DN0

Application Details

Application Notes: IHC 1:40-1:200, ELISA 1:5000-1:10000

Restrictions: For Research Use only

Handling

Format: Liquid

Concentration: 1.2 mg/mL

Buffer: PBS with 0.05 % Sodium azide and 40 % Glycerol, pH 7.4

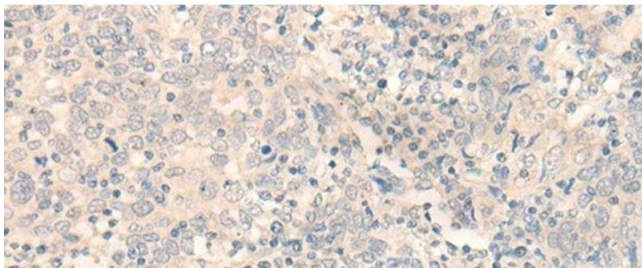
Preservative: Sodium azide

Precaution of Use: This product contains Sodium azide: a POISONOUS AND HAZARDOUS SUBSTANCE which should be handled by trained staff only.

Storage: -20 °C

Storage Comment: Store at -20°C. Avoid freeze / thaw cycles.

Images



Immunohistochemistry (Paraffin-embedded Sections)

Image 1. Immunohistochemistry of paraffin-embedded Human cervical cancer tissue using ERP27 Polyclonal Antibody at dilution of 1:35(x200)