

Datasheet for ABIN7004068

**anti-HSPA2 antibody****1** Image[Go to Product page](#)

## Overview

Quantity:	20 µL
Target:	HSPA2
Reactivity:	Human, Rat, Mouse
Host:	Rabbit
Clonality:	Polyclonal
Conjugate:	This HSPA2 antibody is un-conjugated
Application:	Western Blotting (WB), ELISA

## Product Details

Immunogen:	Fusion protein of human HSPA2
Isotype:	IgG
Characteristics:	Polyclonal Antibody
Purification:	Antigen affinity purification

## Target Details

Target:	HSPA2
Alternative Name:	HSPA2 ( <a href="#">HSPA2 Products</a> )
Background:	Human HSPA2 is a member of the HSPA (HSP70) family of heat-shock proteins, encoded by the gene originally described as testis-specific. Recently, it has been reported that HSPA2 can be also expressed in human somatic tissues in a cell-type specific manner. HSPA2 is a cytosol/nuclear protein able to translocate between cytoplasm and nucleus. HSPA2 is involved

## Target Details

in sperm maturity,function and fertility. Aberrant expression of HSPA2 in testes has been connected with male infertility. Recently,HSPA2 has attracted increased interest due to its possible involvement in carcinogenesis of non-testicular tissues. This antibody well recognized the endogenous HSPA4 protein in testis and multiple cell lines. (21373891)

Molecular Weight: Observed\_MW: Refer to figures  
Calculated\_MW: 70 kDa

UniProt: [P54652](#)

## Application Details

Application Notes: WB 1:500-1:2000, ELISA 1:5000-1:10000

Restrictions: For Research Use only

## Handling

Format: Liquid

Concentration: 0.54 mg/mL

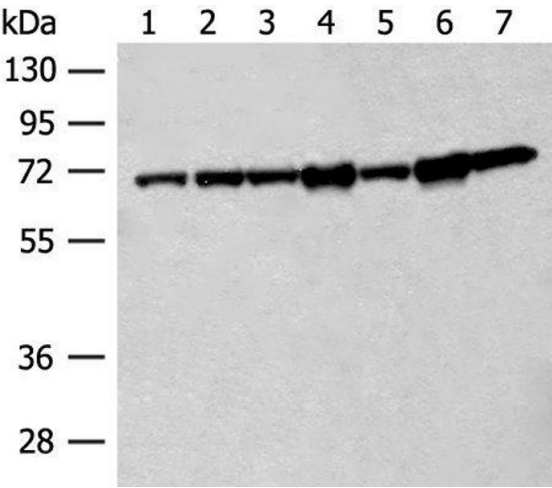
Buffer: PBS with 0.05 % Sodium azide and 40 % Glycerol, pH 7.4

Preservative: Sodium azide

Precaution of Use: This product contains Sodium azide: a POISONOUS AND HAZARDOUS SUBSTANCE which should be handled by trained staff only.

Storage: -20 °C

Storage Comment: Store at -20°C. Avoid freeze / thaw cycles.



**Western Blotting**

**Image 1.** Western blot analysis of 231 cell HeLa cell Jurkat cell A549 cell NIH/3T3 cell Human cerebrum tissue Mouse brain tissue lysates using HSPA2 Polyclonal Antibody at dilution of 1:200