

Datasheet for ABIN7004071  
**anti-TUBGCP4 antibody**[Go to Product page](#)

## 1 Image

## Overview

Quantity:	20 µL
Target:	TUBGCP4
Reactivity:	Human, Mouse
Host:	Rabbit
Clonality:	Polyclonal
Conjugate:	This TUBGCP4 antibody is un-conjugated
Application:	ELISA, Western Blotting (WB)

## Product Details

Immunogen:	Fusion protein of human TUBGCP4
Isotype:	IgG
Characteristics:	Polyclonal Antibody
Purification:	Antigen affinity purification

## Target Details

Target:	TUBGCP4
Alternative Name:	TUBGCP4 ( <a href="#">TUBGCP4 Products</a> )
Background:	This gene encodes a component of the gamma-tubulin ring complex, which is required for microtubule nucleation. In mammalian cells, the protein localizes to centrosomes in association with gamma-tubulin. Crystal structure analysis revealed a structure composed of five helical bundles arranged around conserved hydrophobic cores. An exposed surface area

## Target Details

located in the C-terminal domain is essential and sufficient for direct binding to gamma-tubulin. Mutations in this gene that alter microtubule organization are associated with microcephaly and chorioretinopathy. Alternative splicing results in multiple transcript variants. TUBGCP4 (Tubulin Gamma Complex Associated Protein 4) is a Protein Coding gene. Diseases associated with TUBGCP4 include Microcephaly And Chorioretinopathy, Autosomal Recessive, 3 and Autosomal Recessive Chorioretinopathy-Microcephaly Syndrome. Among its related pathways are Regulation of PLK1 Activity at G2/M Transition and Cell Cycle, Mitotic. GO annotations related to this gene include structural constituent of cytoskeleton. An important paralog of this gene is TUBGCP6.

Molecular Weight:	Observed_MW: Refer to figures Calculated_MW: 76 kDa
-------------------	--

UniProt:	<a href="#">Q9UGJ1</a>
----------	------------------------

Pathways:	<a href="#">M Phase</a>
-----------	-------------------------

## Application Details

Application Notes:	WB 1:500-1:2000, ELISA 1:5000-1:10000
--------------------	---------------------------------------

Restrictions:	For Research Use only
---------------	-----------------------

## Handling

Format:	Liquid
---------	--------

Concentration:	0.6 mg/mL
----------------	-----------

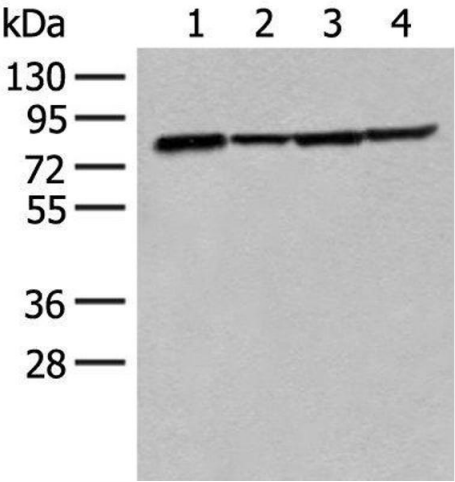
Buffer:	PBS with 0.05 % Sodium azide and 40 % Glycerol, pH 7.4
---------	--

Preservative:	Sodium azide
---------------	--------------

Precaution of Use:	This product contains Sodium azide: a POISONOUS AND HAZARDOUS SUBSTANCE which should be handled by trained staff only.
--------------------	--

Storage:	-20 °C
----------	--------

Storage Comment:	Store at -20°C. Avoid freeze / thaw cycles.
------------------	---



**Western Blotting**

**Image 1.** Western blot analysis of K562 Hela 231 and HT-29 cell lysates using TUBGCP4 Polyclonal Antibody at dilution of 1:300