



Datasheet for ABIN7004141

## anti-MFI2 antibody



[Go to Product page](#)

### 1 Image

#### Overview

Quantity:	20 µL
Target:	MFI2
Reactivity:	Human
Host:	Rabbit
Clonality:	Polyclonal
Conjugate:	This MFI2 antibody is un-conjugated
Application:	Western Blotting (WB), ELISA

#### Product Details

Immunogen:	Fusion protein of human MELTF
Isotype:	IgG
Characteristics:	Polyclonal Antibody
Purification:	Antigen affinity purification

#### Target Details

Target:	MFI2
Alternative Name:	MELTF ( <a href="#">MFI2 Products</a> )
Background:	The protein encoded by this gene is a cell-surface glycoprotein found on melanoma cells. The protein shares sequence similarity and iron-binding properties with members of the transferrin superfamily. The importance of the iron binding function has not yet been identified. This gene resides in the same region of chromosome 3 as members of the transferrin superfamily.

## Target Details

Alternative splicing results in two transcript variants.

Molecular Weight: Observed\_MW: Refer to figures  
Calculated\_MW: 80 kDa

UniProt: [P08582](#)

Pathways: [Transition Metal Ion Homeostasis, Cell-Cell Junction Organization](#)

## Application Details

Application Notes: WB 1:500-1:2000, ELISA 1:5000-1:10000

Restrictions: For Research Use only

## Handling

Format: Liquid

Concentration: 0.72 mg/mL

Buffer: PBS with 0.05 % Sodium azide and 40 % Glycerol, pH 7.4

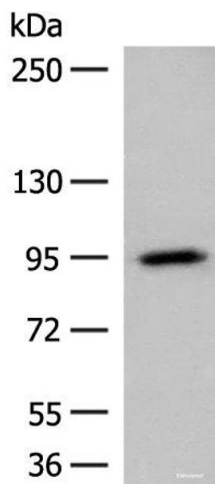
Preservative: Sodium azide

Precaution of Use: This product contains Sodium azide: a POISONOUS AND HAZARDOUS SUBSTANCE which should be handled by trained staff only.

Storage: -20 °C

Storage Comment: Store at -20°C. Avoid freeze / thaw cycles.

## Images



### Western Blotting

**Image 1.** Western blot analysis of A375 cell lysate using MELTF Polyclonal Antibody at dilution of 1:300