



[Go to Product page](#)

Datasheet for ABIN7004529
anti-ZDHHC3 antibody

1 Image

Overview

Quantity:	20 µL
Target:	ZDHHC3
Reactivity:	Human, Mouse
Host:	Rabbit
Clonality:	Polyclonal
Conjugate:	This ZDHHC3 antibody is un-conjugated
Application:	ELISA, Immunohistochemistry (IHC)

Product Details

Immunogen:	Fusion protein of human ZDHHC3
Isotype:	IgG
Characteristics:	Polyclonal Antibody
Purification:	Antigen affinity purification

Target Details

Target:	ZDHHC3
Alternative Name:	ZDHHC3 (ZDHHC3 Products)
Background:	Palmitoyltransferase with broad specificity (PubMed:21926431, PubMed:23034182). Palmitoylates GABA receptors on their gamma subunit (GABRG1, GABRG2 and GABRG3), which regulates synaptic clustering and/or cell surface stability (By similarity). Palmitoylates glutamate receptors GRIA1 and GRIA2, which leads to their retention in Golgi. May also

Target Details

palmitoylate DLG4, DNAJC5 and SNAP25 (By similarity).

UniProt: [Q9NYG2](#)

Application Details

Application Notes: IHC 1:50-1:100, ELISA 1:5000-1:10000

Restrictions: For Research Use only

Handling

Format: Liquid

Concentration: 0.96 mg/mL

Buffer: PBS with 0.05 % Sodium azide and 40 % Glycerol, pH 7.4

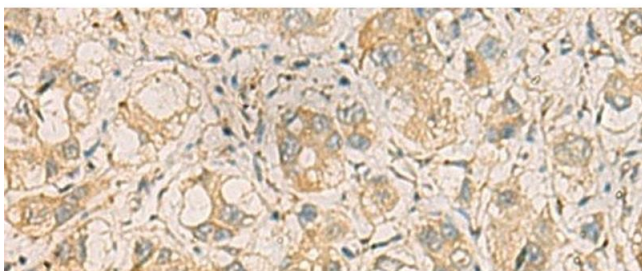
Preservative: Sodium azide

Precaution of Use: This product contains Sodium azide: a POISONOUS AND HAZARDOUS SUBSTANCE which should be handled by trained staff only.

Storage: -20 °C

Storage Comment: Store at -20°C. Avoid freeze / thaw cycles.

Images



Immunohistochemistry (Paraffin-embedded Sections)

Image 1. Immunohistochemistry of paraffin-embedded Human liver cancer tissue using ZDHHC3 Polyclonal Antibody at dilution of 1:35(x200)