

Datasheet for ABIN7004593

**anti-GLUT12 antibody**[Go to Product page](#)**1** Image

## Overview

Quantity:	20 µL
Target:	GLUT12 (SLC2A12)
Reactivity:	Human
Host:	Rabbit
Clonality:	Polyclonal
Conjugate:	This GLUT12 antibody is un-conjugated
Application:	ELISA, Immunohistochemistry (IHC)

## Product Details

Immunogen:	Synthetic peptide of human SLC2A12
Isotype:	IgG
Characteristics:	Polyclonal Antibody
Purification:	Antigen affinity purification

## Target Details

Target:	GLUT12 (SLC2A12)
Alternative Name:	SLC2A12 ( <a href="#">SLC2A12 Products</a> )
Background:	SLC2A12 belongs to a family of transporters that catalyze the uptake of sugars through facilitated diffusion (Rogers et al., 2002). This family of transporters show conservation of 12 transmembrane helices as well as functionally significant amino acid residues (Joost and Thorens, 2001 [PubMed 11780753]).

## Target Details

UniProt:	<a href="#">Q8TD20</a>
Pathways:	<a href="#">Warburg Effect</a>

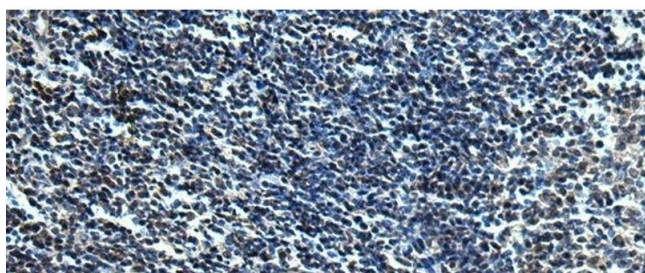
## Application Details

Application Notes:	IHC 1:50-1:100, ELISA 1:5000-1:10000
Restrictions:	For Research Use only

## Handling

Format:	Liquid
Concentration:	0.7 mg/mL
Buffer:	PBS with 0.05 % Sodium azide and 40 % Glycerol, pH 7.4
Preservative:	Sodium azide
Precaution of Use:	This product contains Sodium azide: a POISONOUS AND HAZARDOUS SUBSTANCE which should be handled by trained staff only.
Storage:	-20 °C
Storage Comment:	Store at -20°C. Avoid freeze / thaw cycles.

## Images



### Immunohistochemistry (Paraffin-embedded Sections)

**Image 1.** Immunohistochemistry of paraffin-embedded Human tonsil tissue using SLC2A12 Polyclonal Antibody at dilution of 1:30(x200)