

Datasheet for ABIN7004612

anti-S1PR5 antibody[Go to Product page](#)**1** Image

Overview

Quantity:	20 µL
Target:	S1PR5
Reactivity:	Human, Mouse, Rat
Host:	Rabbit
Clonality:	Polyclonal
Conjugate:	This S1PR5 antibody is un-conjugated
Application:	ELISA, Western Blotting (WB)

Product Details

Immunogen:	Synthetic peptide of human S1PR5
Isotype:	IgG
Characteristics:	Polyclonal Antibody
Purification:	Antigen affinity purification

Target Details

Target:	S1PR5
Alternative Name:	S1PR5 (S1PR5 Products)
Background:	The lysosphingolipid sphingosine 1-phosphate (S1P) regulates cell proliferation, apoptosis, motility, and neurite retraction. Its actions may be both intracellular as a second messenger and extracellular as a receptor ligand. S1P and the structurally related lysolipid mediator lysophosphatidic acid (LPA) signal cells through a set of G protein-coupled receptors known as

Target Details

	EDG receptors. Some EDG receptors (e.g., EDG1, MIM 601974) are S1P receptors, others (e.g., EDG2, MIM 602282) are LPA receptors.
Molecular Weight:	Observed_MW: Refer to figures Calculated_MW: 42 kDa
UniProt:	Q9H228

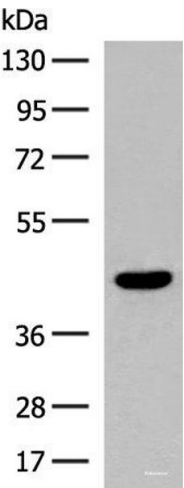
Application Details

Application Notes:	WB 1:500-1:2000, ELISA 1:5000-1:10000
Restrictions:	For Research Use only

Handling

Format:	Liquid
Concentration:	0.6 mg/mL
Buffer:	PBS with 0.05 % Sodium azide and 40 % Glycerol, pH 7.4
Preservative:	Sodium azide
Precaution of Use:	This product contains Sodium azide: a POISONOUS AND HAZARDOUS SUBSTANCE which should be handled by trained staff only.
Storage:	-20 °C
Storage Comment:	Store at -20°C. Avoid freeze / thaw cycles.

Images



Western Blotting

Image 1. Western blot analysis of Human fetal brain tissue lysate using S1PR5 Polyclonal Antibody at dilution of 1:200