

Datasheet for ABIN7004615

**anti-SENP6 antibody**[Go to Product page](#)**1** Image

## Overview

Quantity:	20 µL
Target:	SENP6
Reactivity:	Human
Host:	Rabbit
Clonality:	Polyclonal
Conjugate:	This SENP6 antibody is un-conjugated
Application:	ELISA, Western Blotting (WB)

## Product Details

Immunogen:	Synthetic peptide of human SENP6
Isotype:	IgG
Characteristics:	Polyclonal Antibody
Purification:	Antigen affinity purification

## Target Details

Target:	SENP6
Alternative Name:	SENP6 ( <a href="#">SENP6 Products</a> )
Background:	<p>Ubiquitin-like molecules (UBLs), such as SUMO1 (UBL1, MIM 601912), are structurally related to ubiquitin (MIM 191339) and can be ligated to target proteins in a similar manner as ubiquitin.</p> <p>However, covalent attachment of UBLs does not result in degradation of the modified proteins.</p> <p>SUMO1 modification is implicated in the targeting of RANGAP1 (MIM 602362) to the nuclear</p>

## Target Details

pore complex, as well as in stabilization of I-kappa-B-alpha (NFKBIA, MIM 164008) from degradation by the 26S proteasome.

Molecular Weight: Observed\_MW: Refer to figures  
Calculated\_MW: 126 kDa

UniProt: [Q9GZR1](#)

## Application Details

Application Notes: WB 1:500-1:2000, ELISA 1:5000-1:10000

Restrictions: For Research Use only

## Handling

Format: Liquid

Concentration: 1.14 mg/mL

Buffer: PBS with 0.05 % Sodium azide and 40 % Glycerol, pH 7.4

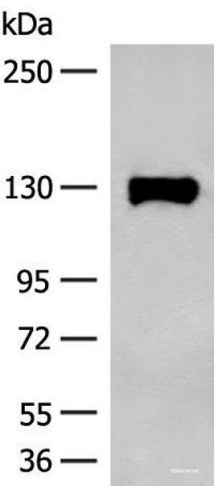
Preservative: Sodium azide

Precaution of Use: This product contains Sodium azide: a POISONOUS AND HAZARDOUS SUBSTANCE which should be handled by trained staff only.

Storage: -20 °C

Storage Comment: Store at -20°C. Avoid freeze / thaw cycles.

## Images



### Western Blotting

**Image 1.** Western blot analysis of Human prostate tissue lysate using SENP6 Polyclonal Antibody at dilution of 1:200