

Datasheet for ABIN7004644

**anti-SLC1A3 antibody**[Go to Product page](#)**1** Image

## Overview

Quantity:	20 µL
Target:	SLC1A3
Reactivity:	Human, Rat, Mouse
Host:	Rabbit
Clonality:	Polyclonal
Conjugate:	This SLC1A3 antibody is un-conjugated
Application:	Western Blotting (WB), ELISA

## Product Details

Immunogen:	Synthetic peptide of human SLC1A3
Isotype:	IgG
Characteristics:	Polyclonal Antibody
Purification:	Antigen affinity purification

## Target Details

Target:	SLC1A3
Alternative Name:	SLC1A3 ( <a href="#">SLC1A3 Products</a> )
Background:	<p>This gene encodes a member of a member of a high affinity glutamate transporter family. This gene functions in the termination of excitatory neurotransmission in central nervous system.</p> <p>Mutations are associated with episodic ataxia, Type 6. Alternative splicing results in multiple transcript variants.</p>

## Target Details

Molecular Weight:	Observed_MW: Refer to figures Calculated_MW: 60 kDa
UniProt:	<a href="#">P43003</a>
Pathways:	<a href="#">Sensory Perception of Sound</a> , <a href="#">Synaptic Membrane</a> , <a href="#">Dicarboxylic Acid Transport</a>

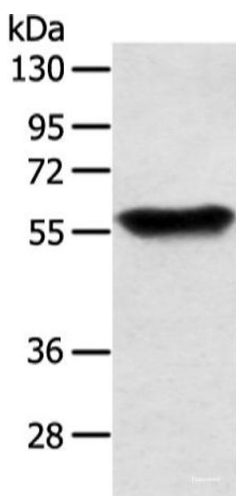
## Application Details

Application Notes:	WB 1:500-1:2000, ELISA 1:2000-1:5000
Restrictions:	For Research Use only

## Handling

Format:	Liquid
Concentration:	0.6 mg/mL
Buffer:	PBS with 0.05 % Sodium azide and 40 % Glycerol, pH 7.4
Preservative:	Sodium azide
Precaution of Use:	This product contains Sodium azide: a POISONOUS AND HAZARDOUS SUBSTANCE which should be handled by trained staff only.
Storage:	-20 °C
Storage Comment:	Store at -20°C. Avoid freeze / thaw cycles.

## Images



### Western Blotting

**Image 1.** Western blot analysis of Human fetal brain tissue using SLC1A3 Polyclonal Antibody at dilution of 1:350