

Datasheet for ABIN7004649

anti-Cyclin T2 antibody**1** Image[Go to Product page](#)

Overview

Quantity:	20 µL
Target:	Cyclin T2 (CCNT2)
Reactivity:	Human
Host:	Rabbit
Clonality:	Polyclonal
Conjugate:	This Cyclin T2 antibody is un-conjugated
Application:	Western Blotting (WB), ELISA

Product Details

Immunogen:	Synthetic peptide of human CCNT2
Isotype:	IgG
Characteristics:	Polyclonal Antibody
Purification:	Antigen affinity purification

Target Details

Target:	Cyclin T2 (CCNT2)
Alternative Name:	CCNT2 (CCNT2 Products)
Background:	The protein encoded by this gene belongs to the highly conserved cyclin family, whose members are characterized by a dramatic periodicity in protein abundance through the cell cycle. Cyclins function as regulators of CDK kinases. Different cyclins exhibit distinct expression and degradation patterns which contribute to the temporal coordination of each

Target Details

mitotic event. This cyclin and its kinase partner CDK9 were found to be subunits of the transcription elongation factor p-TEFb. The p-TEFb complex containing this cyclin was reported to interact with, and act as a negative regulator of human immunodeficiency virus type 1 (HIV-1) Tat protein.

Molecular Weight: Observed_MW: Refer to figures
Calculated_MW: 81 kDa

UniProt: [O60583](#)

Application Details

Application Notes: WB 1:500-1:2000, ELISA 1:5000-1:10000

Restrictions: For Research Use only

Handling

Format: Liquid

Concentration: 0.8 mg/mL

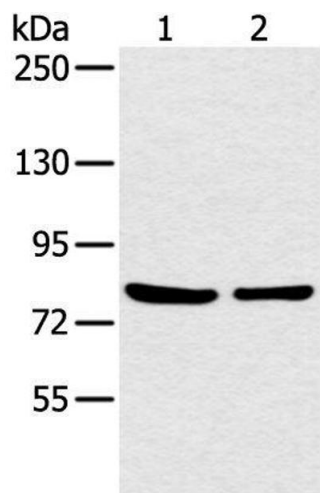
Buffer: PBS with 0.05 % Sodium azide and 40 % Glycerol, pH 7.4

Preservative: Sodium azide

Precaution of Use: This product contains Sodium azide: a POISONOUS AND HAZARDOUS SUBSTANCE which should be handled by trained staff only.

Storage: -20 °C

Storage Comment: Store at -20°C. Avoid freeze / thaw cycles.



Western Blotting

Image 1. Western blot analysis of 293T cell using CCNT2 Polyclonal Antibody at dilution of 1:200