

Datasheet for ABIN7004686  
**anti-Gastrokine 2 antibody**[Go to Product page](#)

## 1 Image

## Overview

Quantity:	20 µL
Target:	Gastrokine 2 (GKN2)
Reactivity:	Human
Host:	Rabbit
Clonality:	Polyclonal
Conjugate:	This Gastrokine 2 antibody is un-conjugated
Application:	Western Blotting (WB), ELISA

## Product Details

Immunogen:	Synthetic peptide of human GKN2
Isotype:	IgG
Characteristics:	Polyclonal Antibody
Purification:	Antigen affinity purification

## Target Details

Target:	Gastrokine 2 (GKN2)
Alternative Name:	GKN2 ( <a href="#">GKN2 Products</a> )
Background:	Gastrokine2 is a putative gastric cancerspecific tumor suppressor gene, the loss of which is known to be involved in the development and progression of gastric cancer, and restoration of gastrokine2 expression inhibits growth of gastric cancer cells in vitro. However, the underlying mechanism of these effects requires elucidation.

### Target Details

Molecular Weight:	Observed_MW: Refer to figures
	Calculated_MW: 20 kDa
UniProt:	<a href="#">Q86XP6</a>

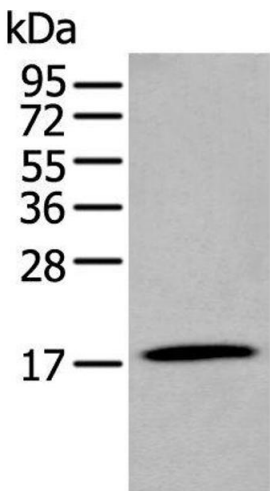
### Application Details

Application Notes:	WB 1:500-1:2000, ELISA 1:5000-1:10000
Restrictions:	For Research Use only

### Handling

Format:	Liquid
Concentration:	0.8 mg/mL
Buffer:	PBS with 0.05 % Sodium azide and 40 % Glycerol, pH 7.4
Preservative:	Sodium azide
Precaution of Use:	This product contains Sodium azide: a POISONOUS AND HAZARDOUS SUBSTANCE which should be handled by trained staff only.
Storage:	-20 °C
Storage Comment:	Store at -20°C. Avoid freeze / thaw cycles.

### Images



#### Western Blotting

**Image 1.** Western blot analysis of Human stomach tissue lysate using GKN2 Polyclonal Antibody at dilution of 1:250