



Datasheet for ABIN7004843

anti-EN1 antibody



[Go to Product page](#)

1 Image

Overview

Quantity:	20 µL
Target:	EN1
Reactivity:	Human, Mouse
Host:	Rabbit
Clonality:	Polyclonal
Conjugate:	This EN1 antibody is un-conjugated
Application:	Western Blotting (WB), ELISA

Product Details

Immunogen:	Synthetic peptide of human EN1
Isotype:	IgG
Characteristics:	Polyclonal Antibody
Purification:	Antigen affinity purification

Target Details

Target:	EN1
Alternative Name:	EN1 (EN1 Products)
Background:	Homeobox-containing genes are thought to have a role in controlling development. In <i>Drosophila</i> , the 'engrailed' (en) gene plays an important role during development in segmentation, where it is required for the formation of posterior compartments. Different mutations in the mouse homologs, En1 and En2, produced different developmental defects that

Target Details

frequently are lethal. The human engrailed homologs 1 and 2 encode homeodomain-containing proteins and have been implicated in the control of pattern formation during development of the central nervous system.

Molecular Weight: Observed_MW: Refer to figures
Calculated_MW: 40 kDa

UniProt: [Q05925](#)

Pathways: [Dopaminergic Neurogenesis](#)

Application Details

Application Notes: WB 1:500-1:2000, ELISA 1:5000-1:10000

Restrictions: For Research Use only

Handling

Format: Liquid

Concentration: 0.78 mg/mL

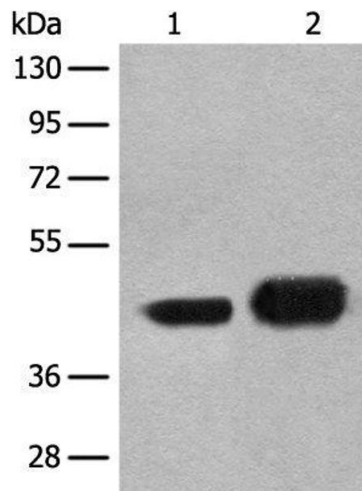
Buffer: PBS with 0.05 % Sodium azide and 40 % Glycerol, pH 7.4

Preservative: Sodium azide

Precaution of Use: This product contains Sodium azide: a POISONOUS AND HAZARDOUS SUBSTANCE which should be handled by trained staff only.

Storage: -20 °C

Storage Comment: Store at -20°C. Avoid freeze / thaw cycles.



Western Blotting

Image 1. Western blot analysis of A172 and HEPG2 cell lysates using EN1 Polyclonal Antibody at dilution of 1:300