



[Go to Product page](#)

Datasheet for ABIN7004882  
**anti-FAM91A1 antibody**

1 Image

### Overview

|              |  |
|--------------|--|
| Quantity:    | 20 µL                                  |
| Target:      | FAM91A1                                |
| Reactivity:  | Human, Mouse                           |
| Host:        | Rabbit                                 |
| Clonality:   | Polyclonal                             |
| Conjugate:   | This FAM91A1 antibody is un-conjugated |
| Application: | ELISA, Immunohistochemistry (IHC)      |

### Product Details

|                  |                                    |
|------------------|------------------------------------|
| Immunogen:       | Synthetic peptide of human FAM91A1 |
| Isotype:         | IgG                                |
| Characteristics: | Polyclonal Antibody                |
| Purification:    | Antigen affinity purification      |

### Target Details

|                   |  |
|-------------------|--|
| Target:           | FAM91A1  |
| Alternative Name: | FAM91A1 ( <a href="#">FAM91A1 Products</a> )   |
| Background:       | FAM91A1 (family with sequence similarity 91, member A1) is a 94 kDa phospho-protein that is not yet characterized. |
| UniProt:          | <a href="#">Q658Y4</a>   |

## Application Details

---

Application Notes: IHC 1:30-1:150, ELISA 1:5000-1:10000

---

Restrictions: For Research Use only

---

## Handling

---

Format: Liquid

---

Concentration: 0.84 mg/mL

---

Buffer: PBS with 0.05 % Sodium azide and 40 % Glycerol, pH 7.4

---

Preservative: Sodium azide

---

Precaution of Use: This product contains Sodium azide: a POISONOUS AND HAZARDOUS SUBSTANCE which should be handled by trained staff only.

---

Storage: -20 °C

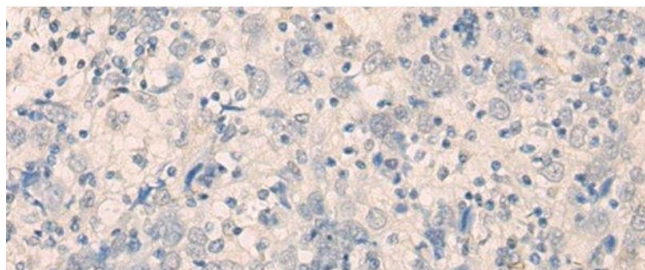
---

Storage Comment: Store at -20°C. Avoid freeze / thaw cycles.

---

## Images

---



### Immunohistochemistry (Paraffin-embedded Sections)

**Image 1.** Immunohistochemistry of paraffin-embedded Human cervical cancer tissue using FAM91A1 Polyclonal Antibody at dilution of 1:35(x200)