

Datasheet for ABIN7005058

anti-Thrombospondin 2 antibody[Go to Product page](#)**1** Image

Overview

Quantity:	20 µL
Target:	Thrombospondin 2 (THBS2)
Reactivity:	Mouse, Human
Host:	Rabbit
Clonality:	Polyclonal
Conjugate:	This Thrombospondin 2 antibody is un-conjugated
Application:	ELISA, Immunohistochemistry (IHC)

Product Details

Immunogen:	Synthetic peptide of human THBS2
Isotype:	IgG
Characteristics:	Polyclonal Antibody
Purification:	Affinity purification

Target Details

Target:	Thrombospondin 2 (THBS2)
Alternative Name:	THBS2 (THBS2 Products)
Background:	The protein encoded by this gene belongs to the thrombospondin family. It is a disulfide-linked homotrimeric glycoprotein that mediates cell-to-cell and cell-to-matrix interactions. This protein has been shown to function as a potent inhibitor of tumor growth and angiogenesis. Studies of the mouse counterpart suggest that this protein may modulate the cell surface properties of

Target Details

mesenchymal cells and be involved in cell adhesion and migration.

NCBI Accession: [NP_003238](#)

UniProt: [P35442](#)

Application Details

Application Notes: IHC 1:25-100, ELISA 1:2000-5000

Restrictions: For Research Use only

Handling

Format: Liquid

Concentration: 0.5 mg/mL

Buffer: PBS with 0.05 % sodium azide and 50 % glycerol, PH7.4

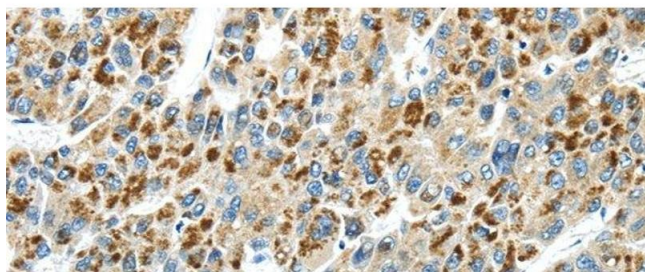
Preservative: Sodium azide

Precaution of Use: This product contains Sodium azide: a POISONOUS AND HAZARDOUS SUBSTANCE which should be handled by trained staff only.

Storage: -20 °C

Storage Comment: Store at -20°C. Avoid freeze / thaw cycles.

Images



Immunohistochemistry (Paraffin-embedded Sections)

Image 1. Immunohistochemistry of paraffin-embedded Human liver cancer tissue using THBS2 Polyclonal Antibody at dilution 1:30